



PCI po CABG

XXXV. Workshop ČAIK

15. - 17.4.2026



Historie ICHS

- 2006 – STEMI PS – PCI prox. RIA-RD
- 2018 - AP – 3VD – 3*CABG - RIA-LIMA, SVG-RMS, SVG-RIVP
- **3/2026 – nestabilní AP - reSKG**

Další diagnózy

- DM II.typu
- HT
- Dyslipidemie
- St.p. resekci ca ledviny (2019; plná remise)
- BMI 36 (95kg, 171cm)

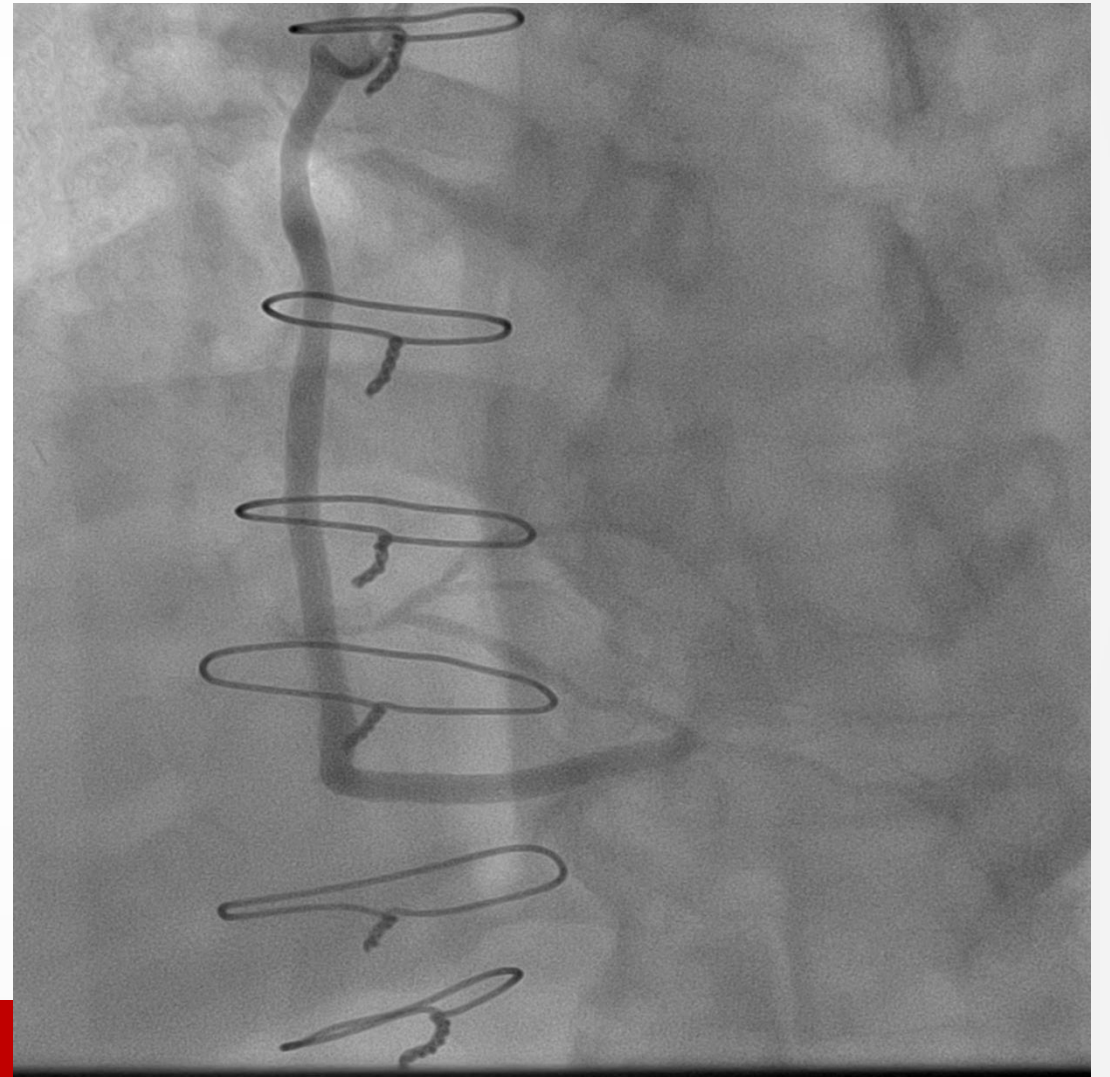
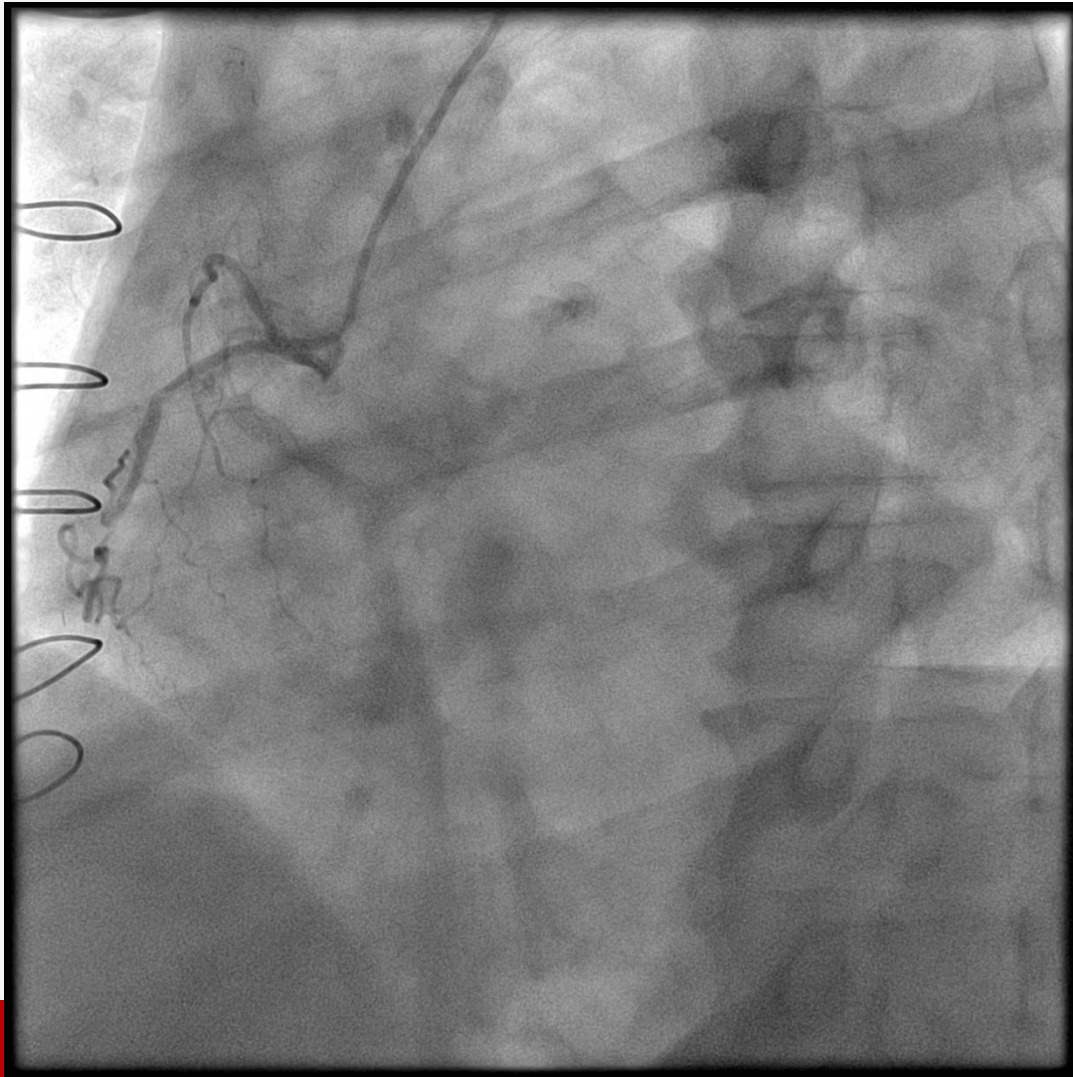
ECHO

- LK normální velikosti, EF LV **60 %**
- hypokineza anteroseptálně
- bez významných chlopeních vad



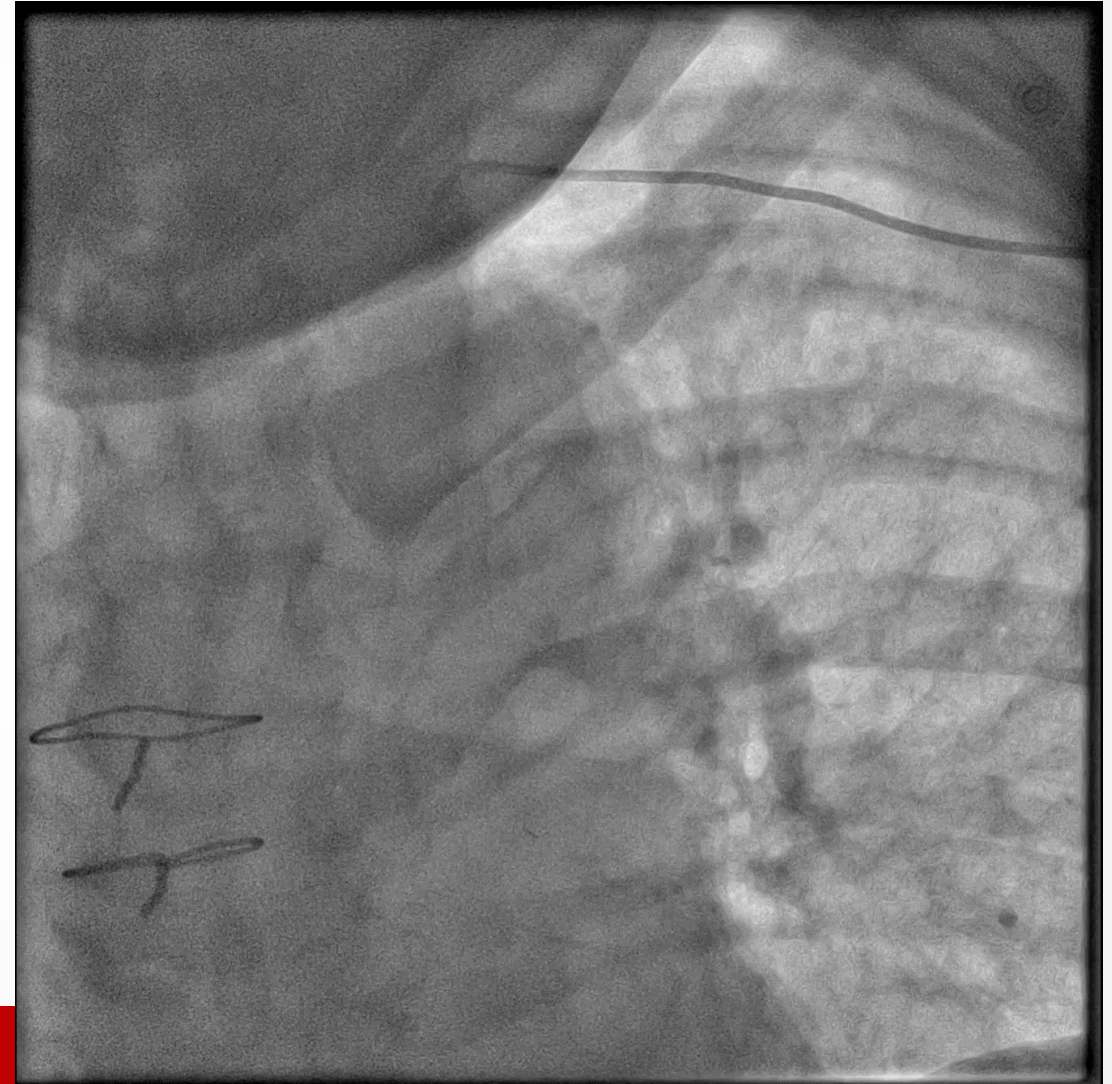
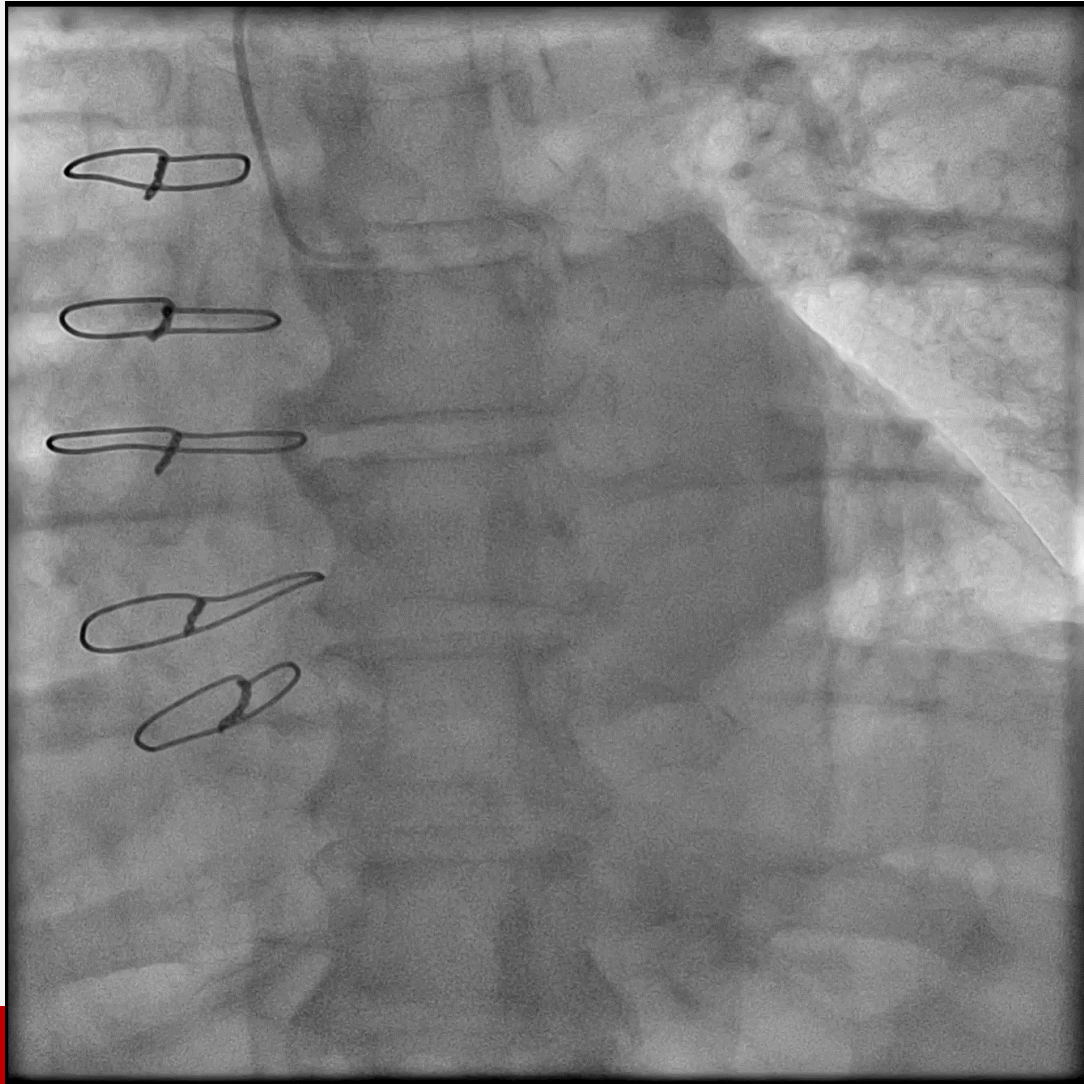


SVG - RIVP



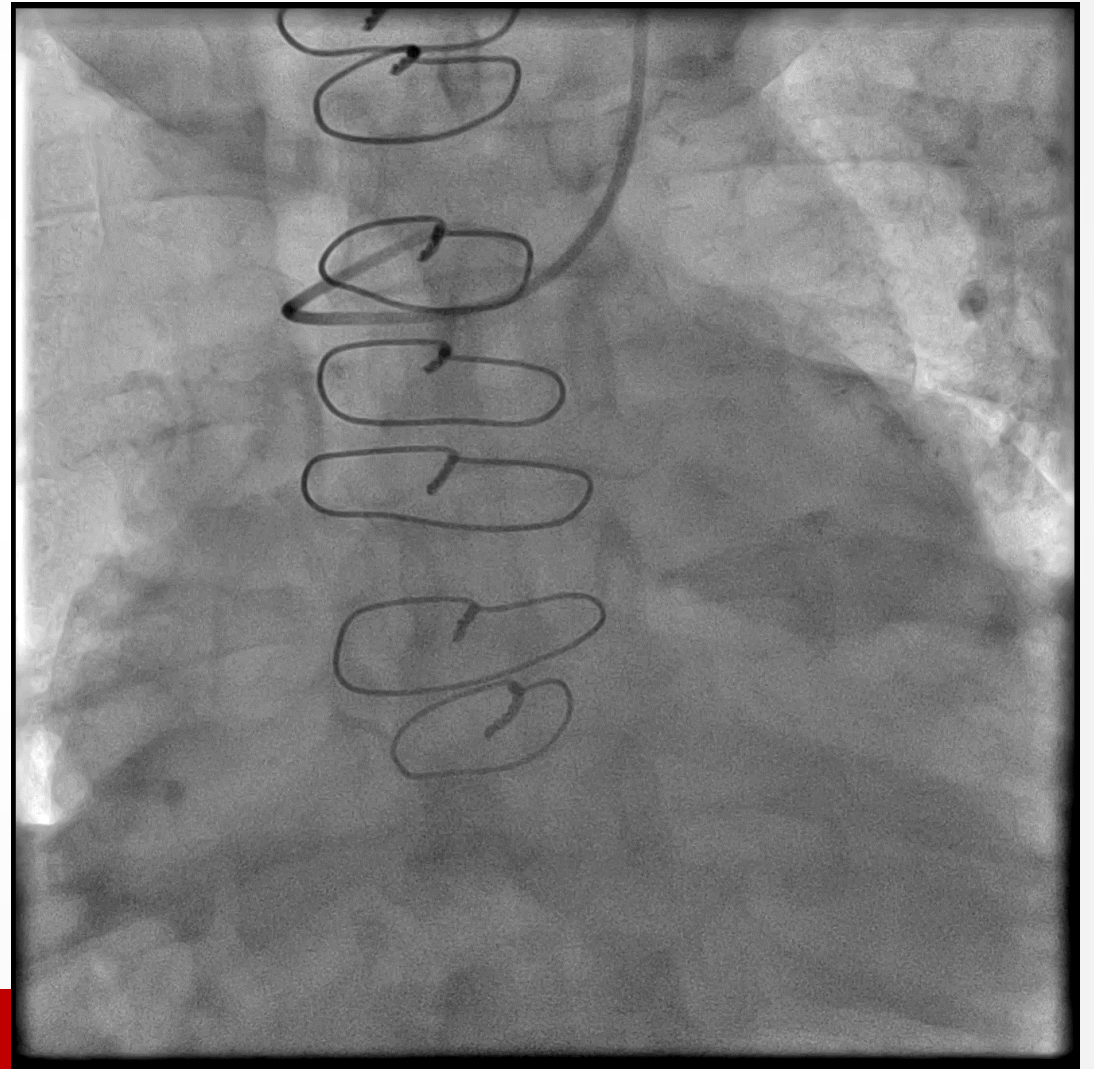
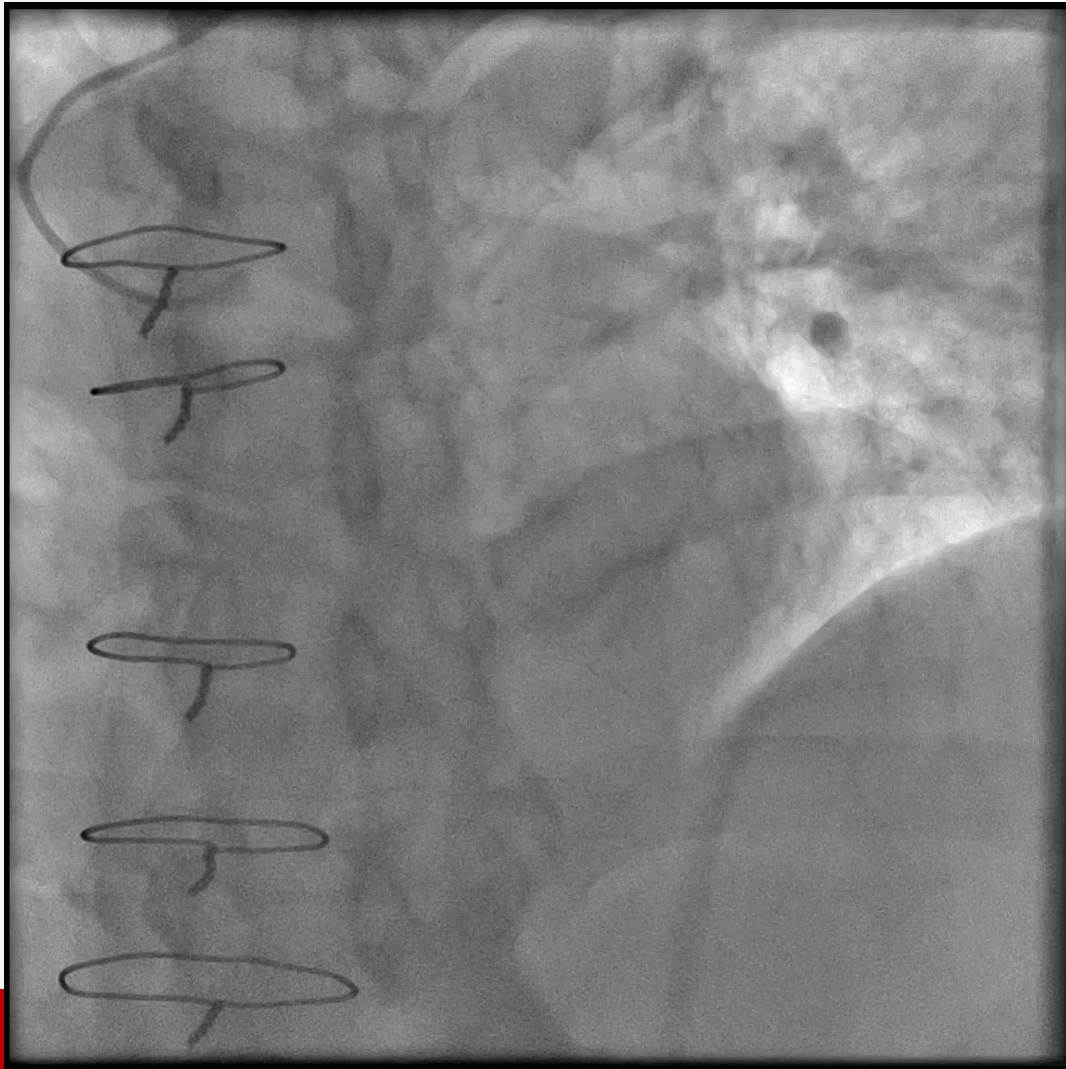


IMA - RIA

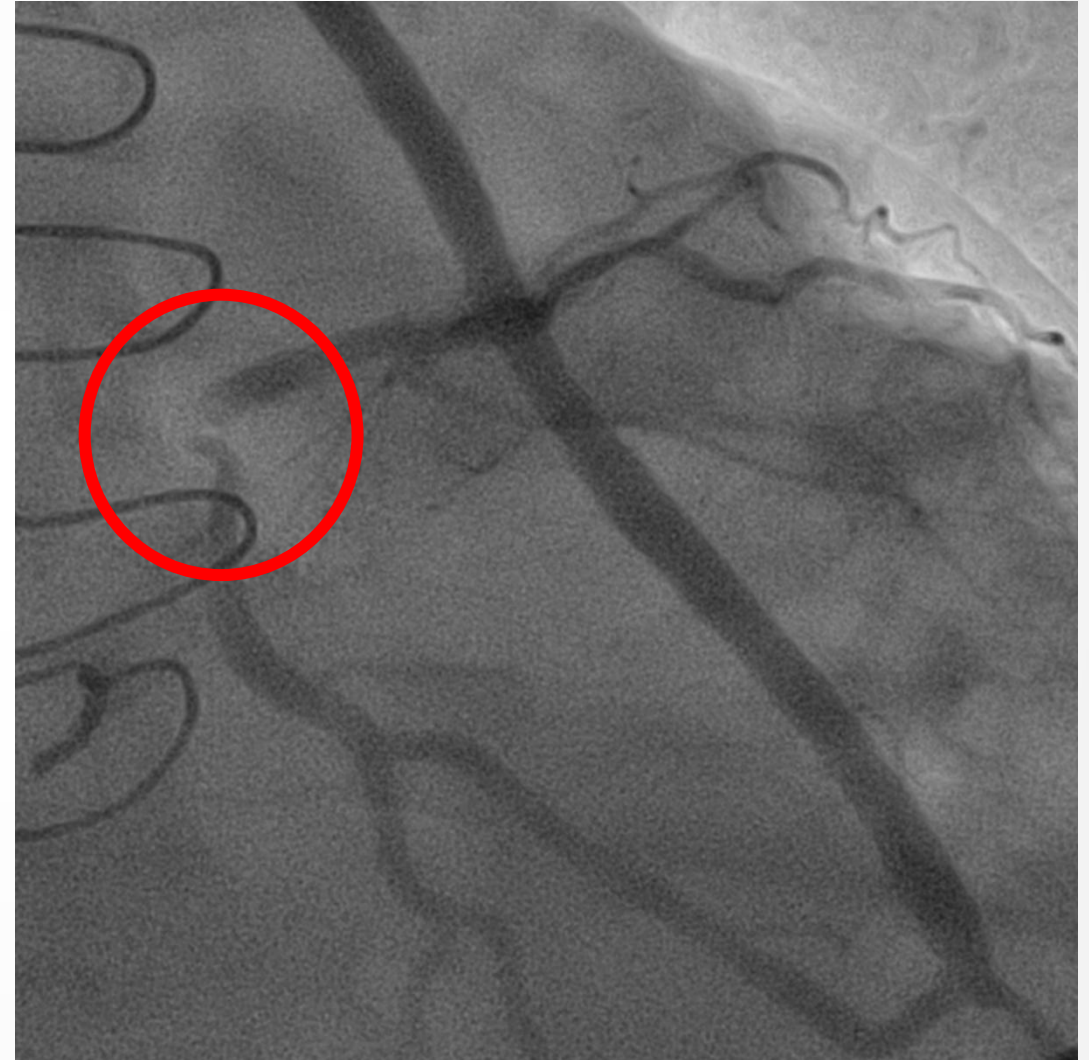
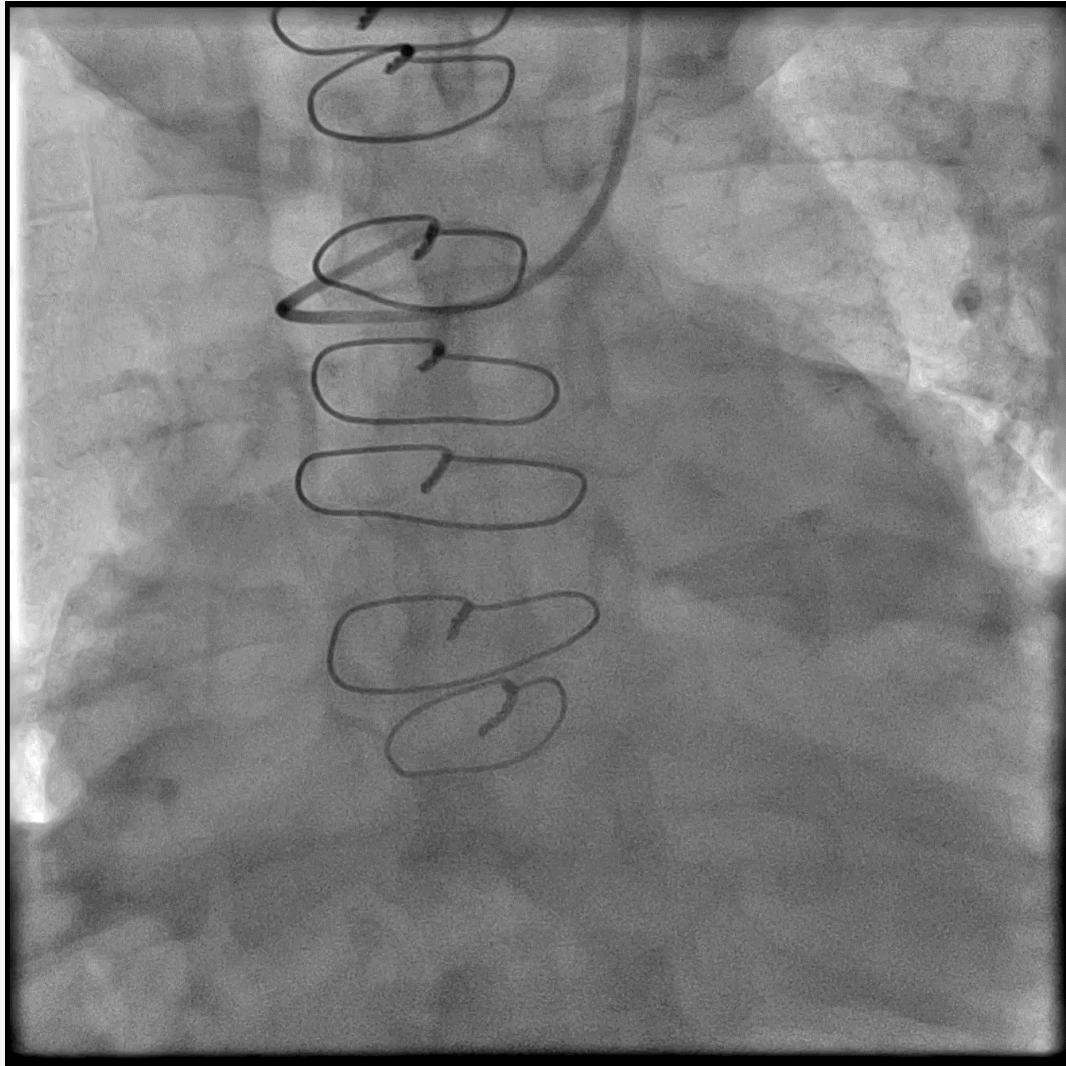




SVG - RMS



Culprit léze?



Další postup?



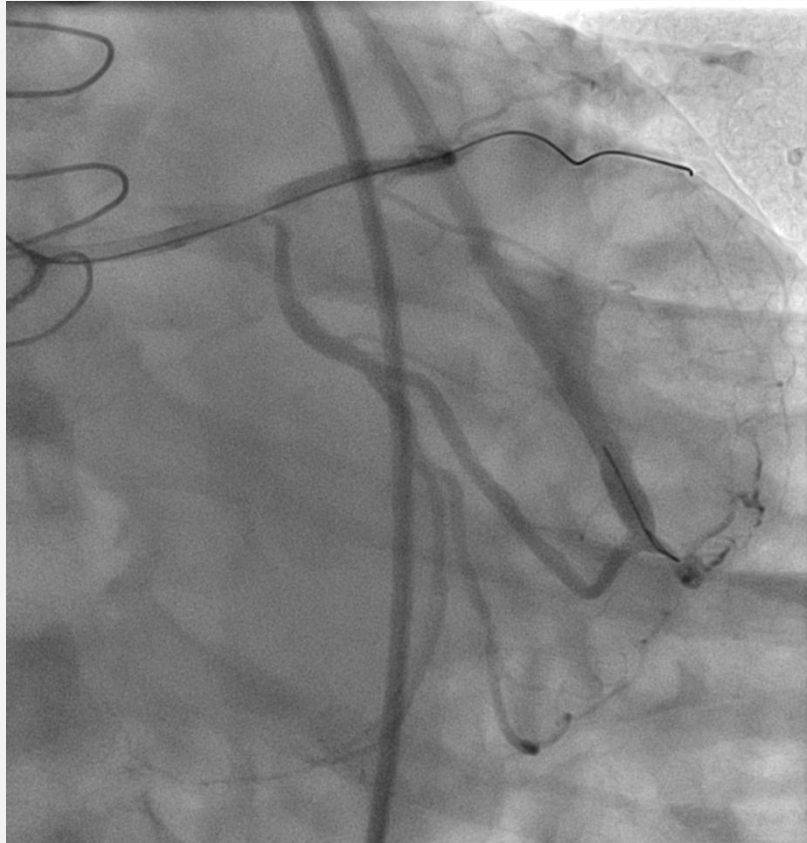
Konzervativně ?

PCI kmen – RIA – RC ?

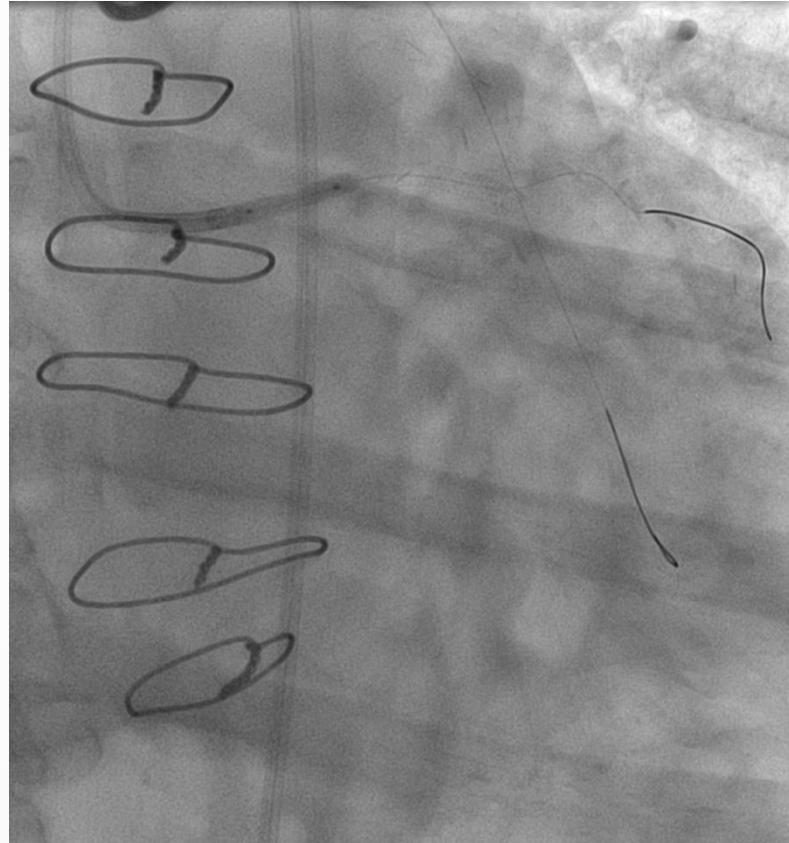
PCI kmen – RIA – RC



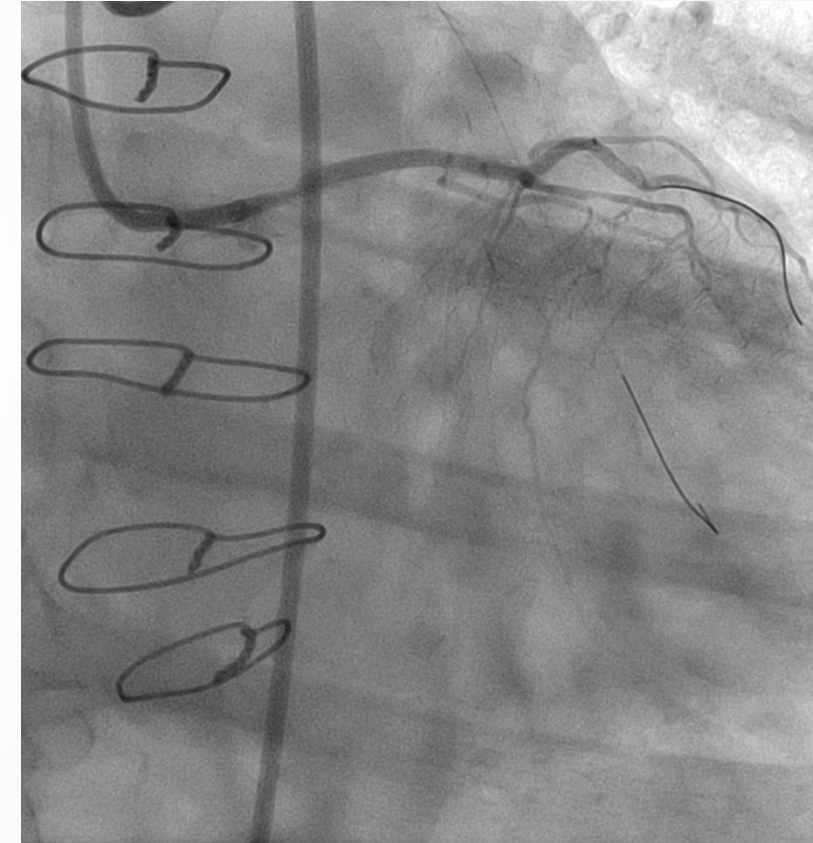
kmen – RC – neúspěšný antegrádní wiring
retrográdní plnění via SVG



predil. kmen-RIA SC 2,5*12



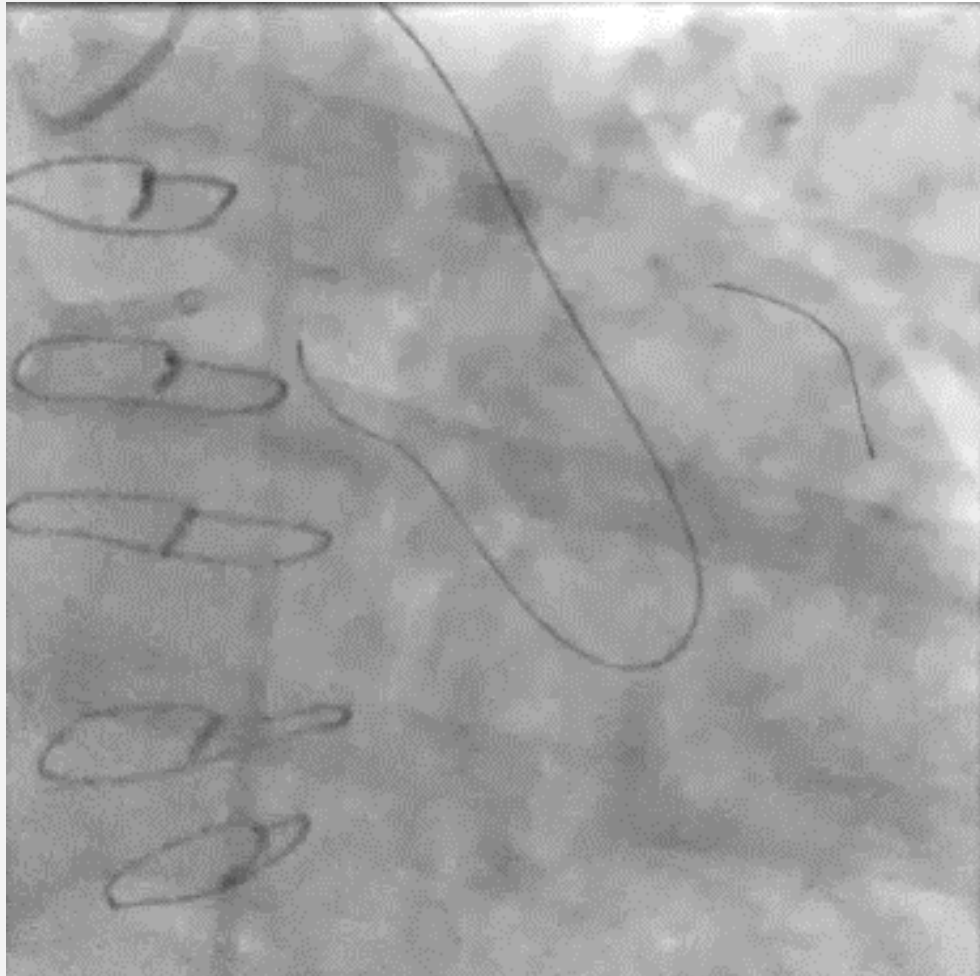
antegrádní plnění
uzávěr RC - antegrádně



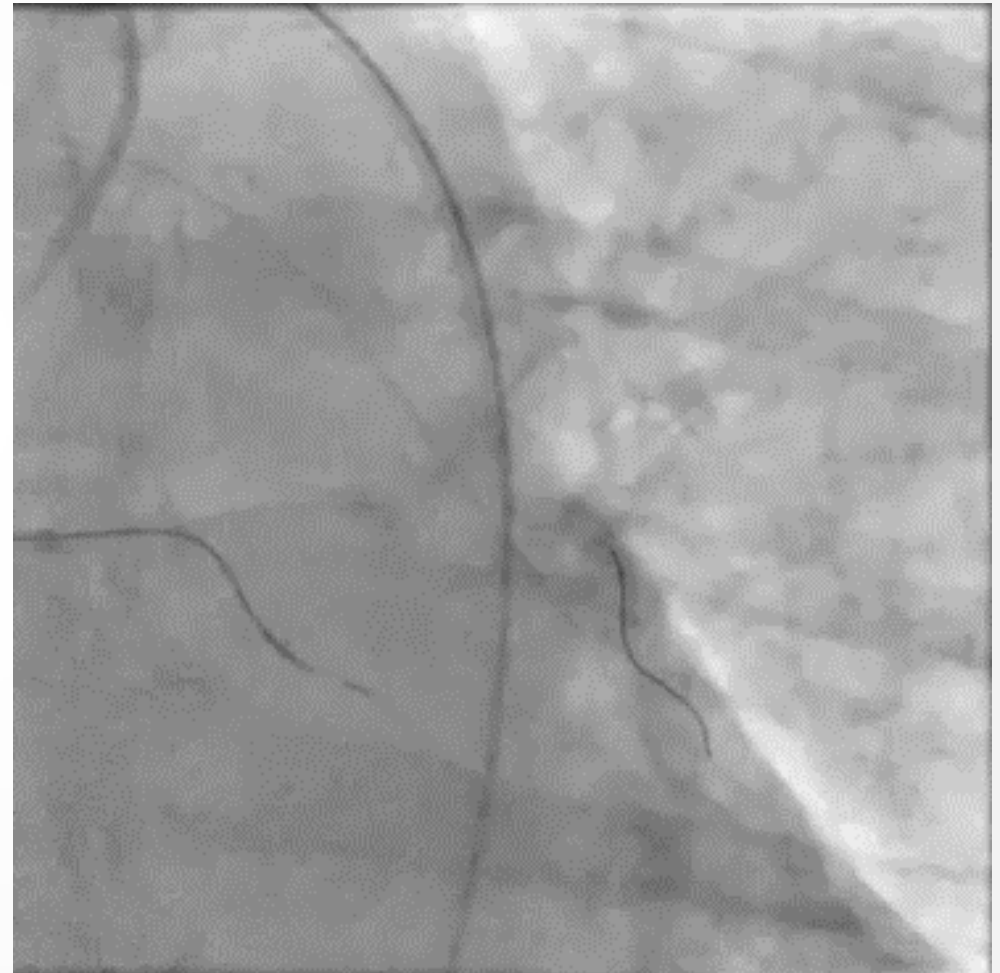
PCI kmen – RIA – RC



RC-kmen retrográdní wiring (Fielder XTA + Caravel)
Tip-in v guiding katetru



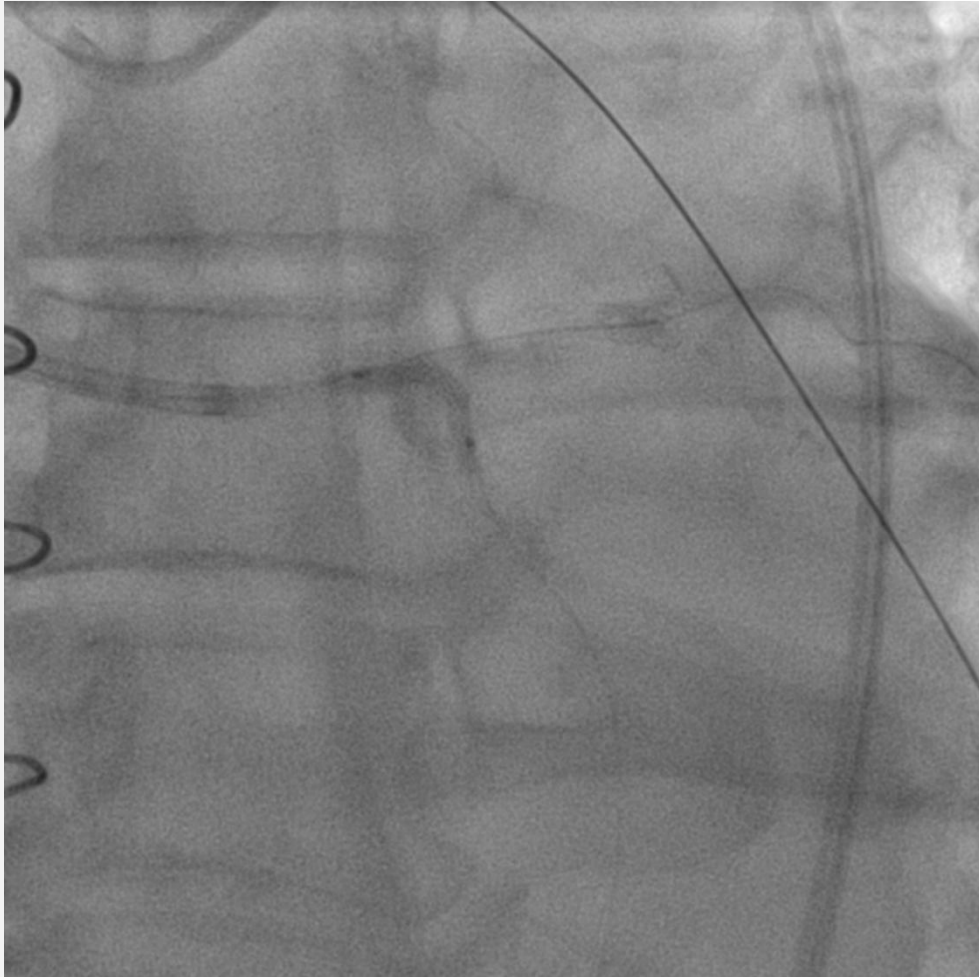
Antegrádní rewiring (SionBlue)



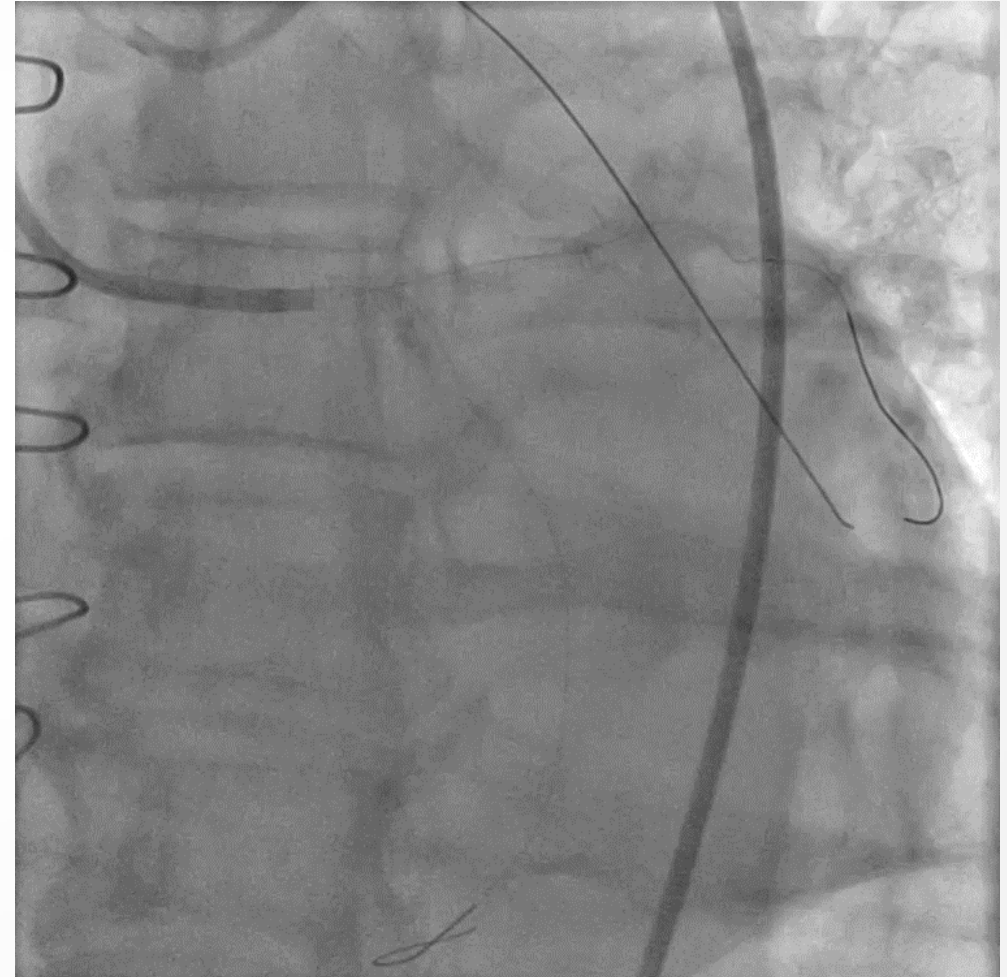
PCI kmen – RIA – RC



predil kmen-RC SC 2,5*12



náznak antegrádního plnění



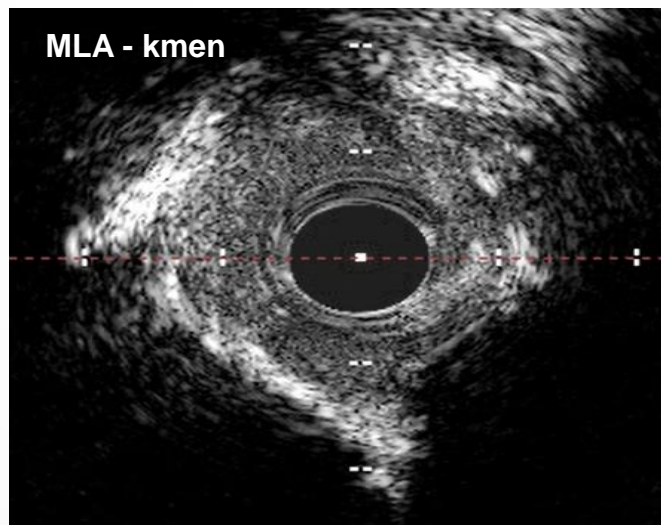
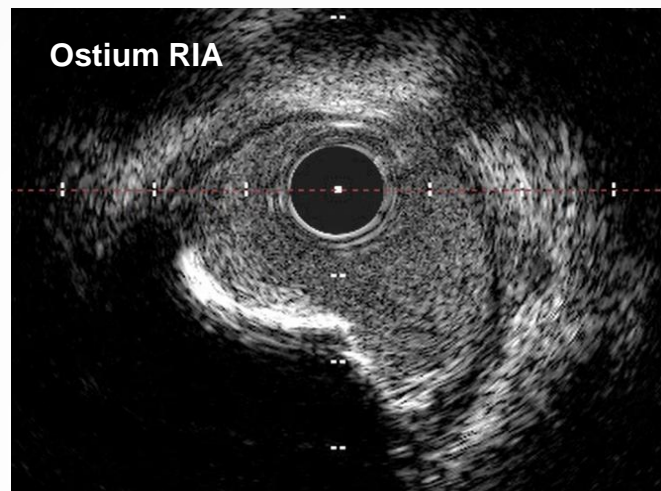
PCI kmen – RIA – RC



predil kmen-RIA NC 3,5*15



IVUS kmen-RIA



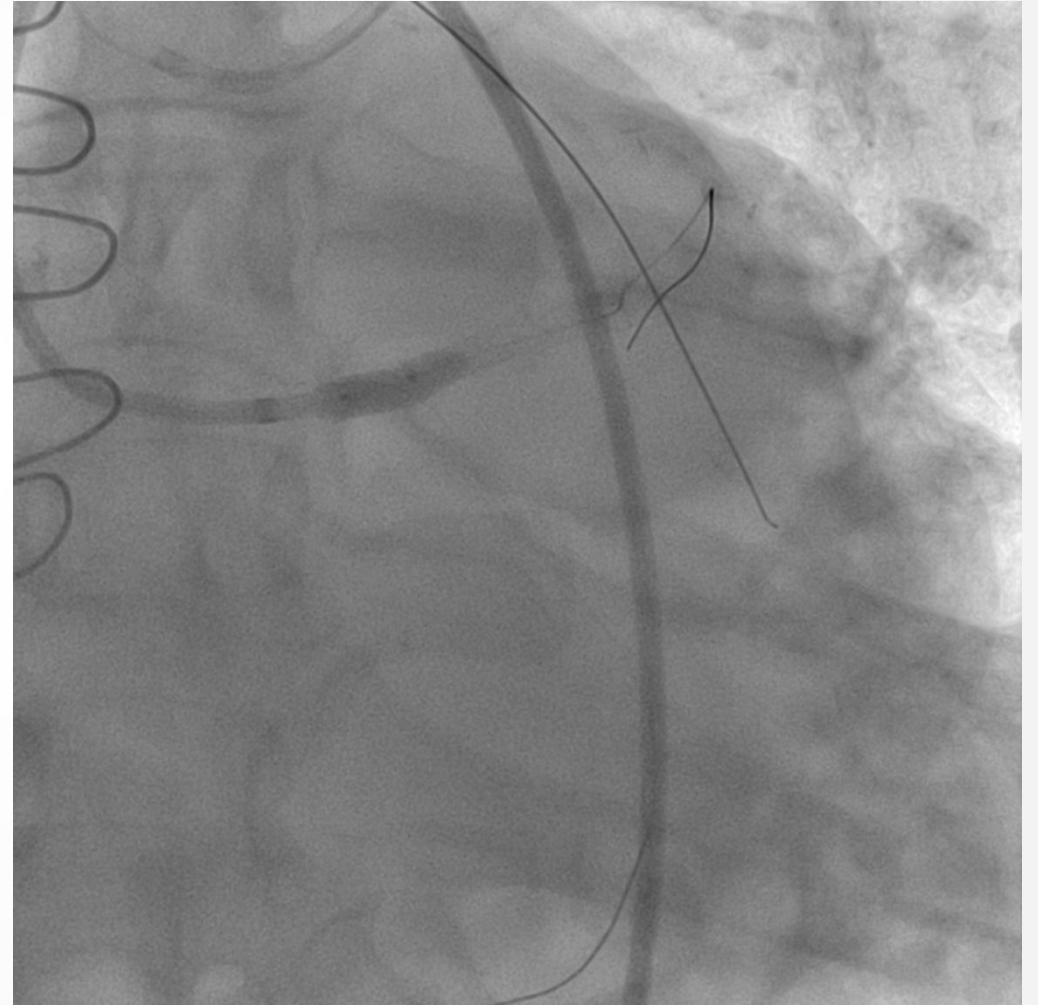
Megatron 3,5*20



PCI kmen – RIA – RC



POT NC 3,5*15 18atm



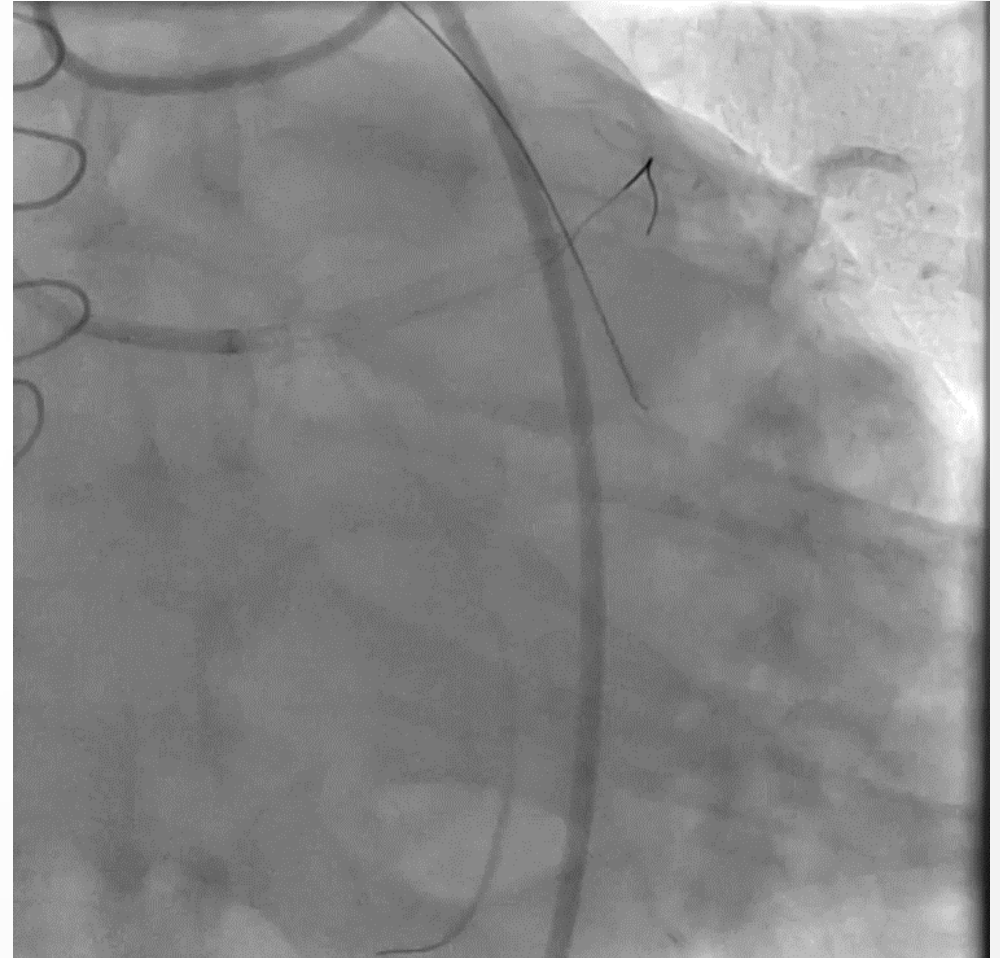
PCI kmen – RIA – RC



antegrádní plnění



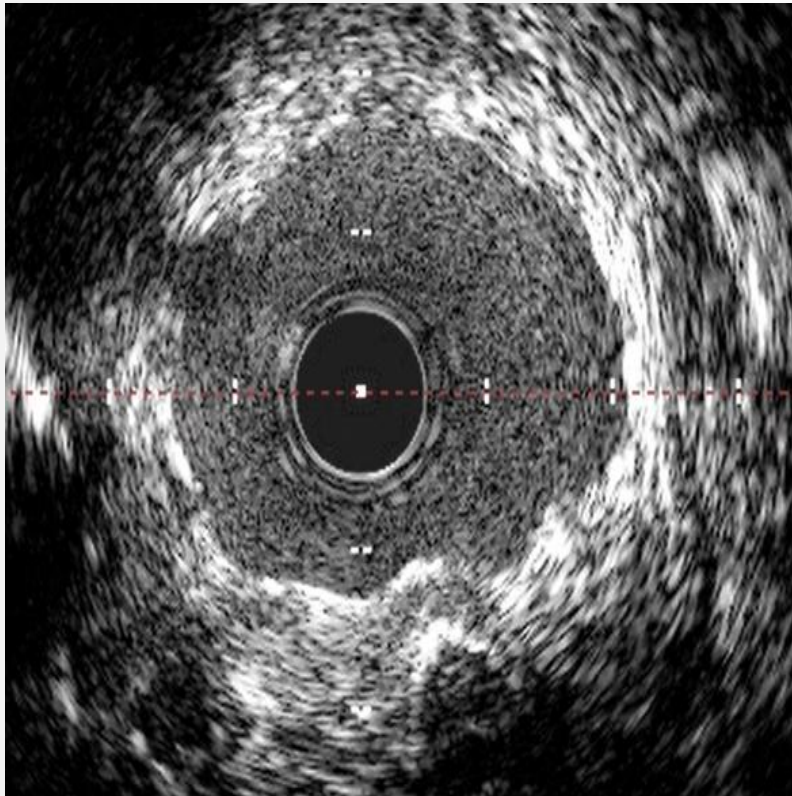
retrográdní plnění via SVG



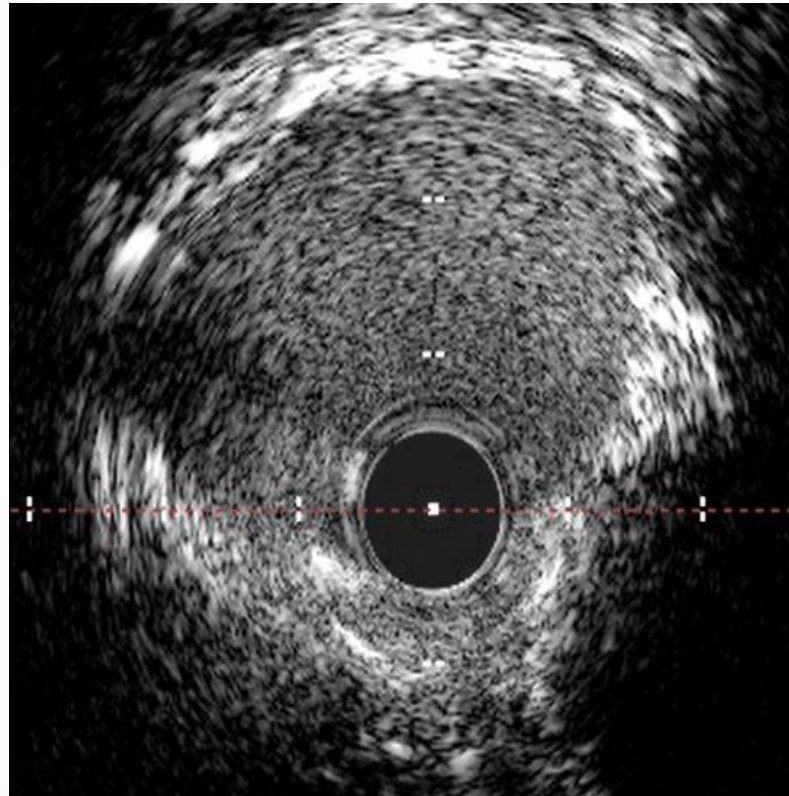
PCI kmen – RIA – RC



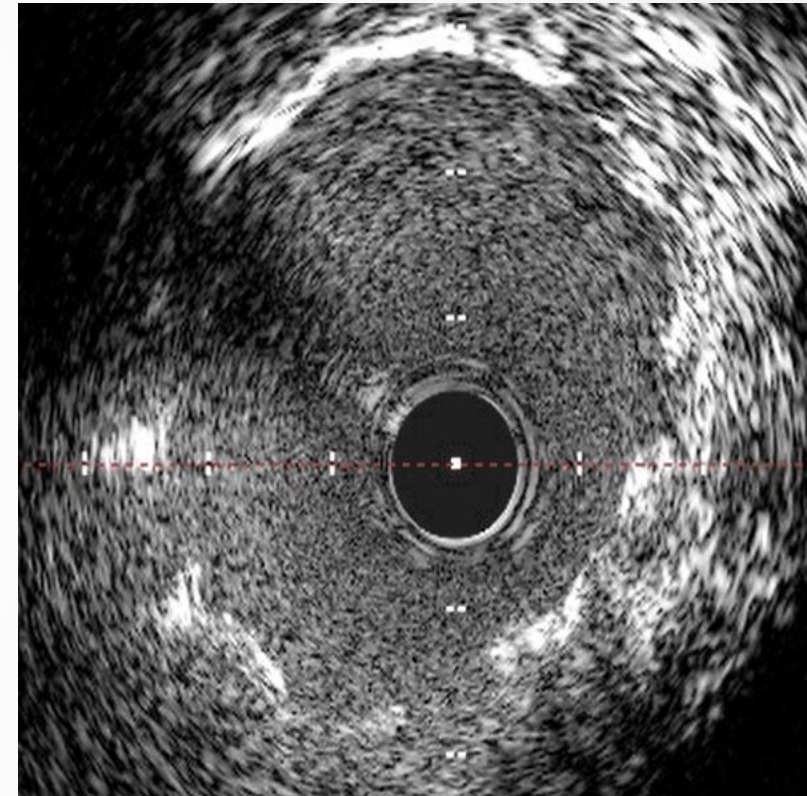
Ostium RIA



Distální kmen



Ostium kmene





Optimální výsledek?

Kissing/2stent strategy kmen-RIA-RC?

Coiling SVG?

A decorative bar at the bottom of the slide, consisting of a red section on the left and a blue section on the right.