

ENDO-VASKULÁRNÍ LÉČBA AORTO-ILICKÝCH STENÓZ A OKLUZÍ

Tomáš Hauer

Sjezd ČKS, Brno, Květen 2026



Manifestace

- Proximální i distální klaudikace
- LI symptomatologie
- Coxalgie
- Lerishův syndrom
- Akutní ischemie často s pseudoneurologickou symptomatologií, AKI riziko

Klasifikace aortoiliackých lézí

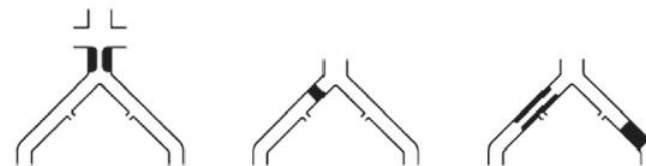
TASC A lesions

Unilateral or bilateral CIA stenoses
Unilateral or bilateral single short (≤ 3 cm)
EIA stenosis



TASC B lesions

Short (≤ 3 cm) stenosis of the infrarenal aorta
Unilateral CIA occlusion
Single or multiple stenosis totalling 3 to 10 cm involving the EIA not extending into the CFA
Unilateral EIA occlusion not involving the origins of the internal iliac or CFA



TASC C lesions

Bilateral CIA occlusions
Bilateral EIA stenoses 3 to 10 cm long not extending into the CFA
Unilateral EIA stenosis extending into the CFA
Unilateral EIA occlusion involving the origins of the internal iliac and or CFA
Heavily calcified unilateral EIA occlusion with or without involvement of the origins of the internal iliac and or CFA



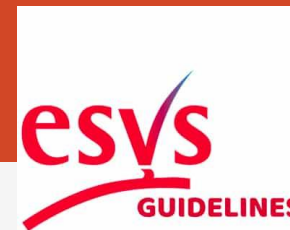
TASC D lesions

Infrarenal aorto-iliac occlusion
Diffuse disease involving the aorta and both iliac arteries
Diffuse multiple stenoses involving the unilateral CIA, EIA, and CFA
Unilateral occlusions of both CIA and EIA
Bilateral EIA occlusions
Iliac stenoses in patients with AAA not amenable to endograft placement



Figure 8. Overview of the Trans-Atlantic Inter-Society Consensus anatomical classification of lower limb peripheral artery disease lesion severities in aortoiliac segment.

Otevřená chirurgie

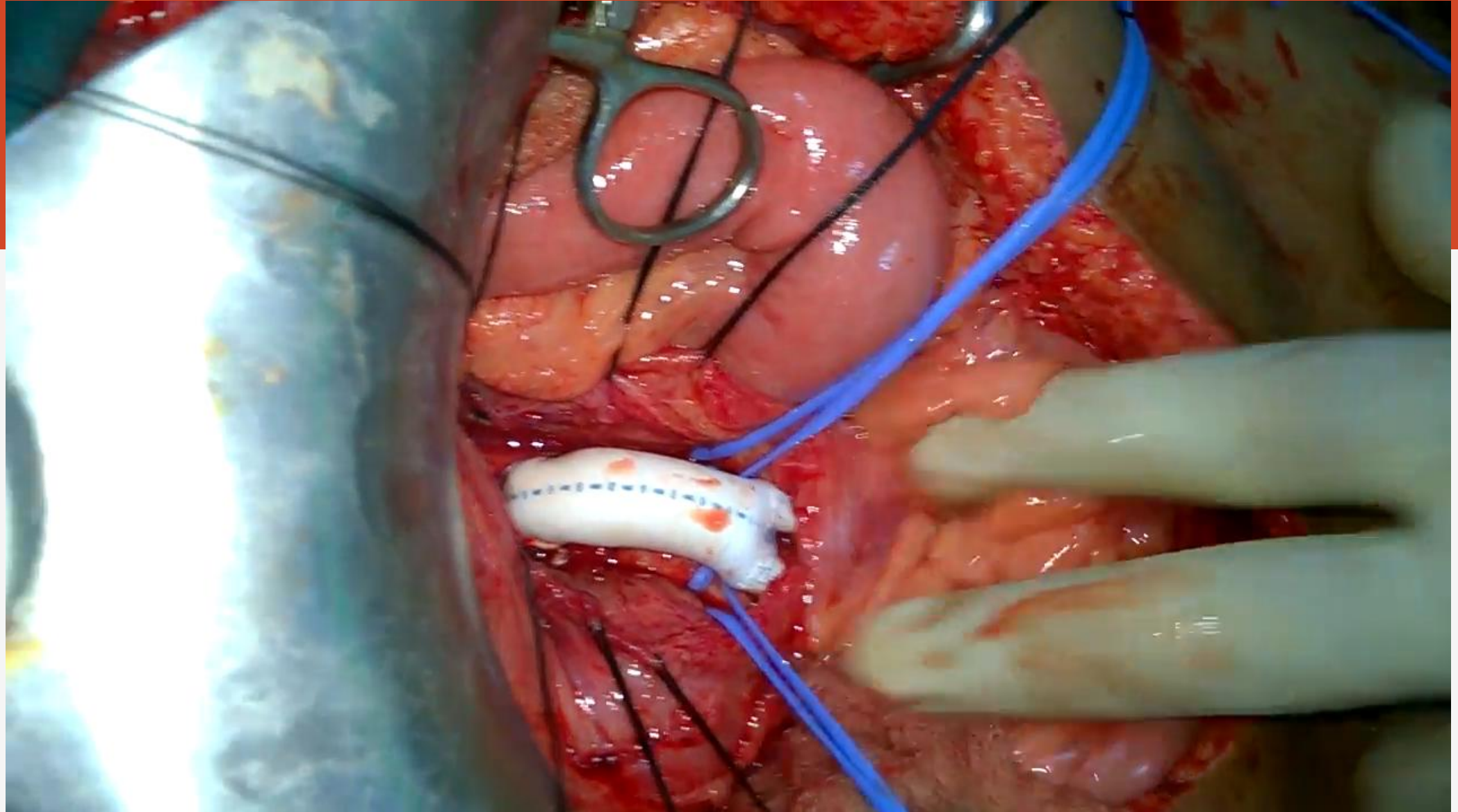


- Aorto bilická náhrada
- Aorto bifemorální náhrada
- Těžké klaudikace
- CLTI/ALI

Recommendation 58

For patients with disabling intermittent claudication undergoing revascularisation who are considered as low risk with long life expectancy, open surgery may be considered for Trans-Atlantic Inter-Society Consensus Document II C/D lesions that include the iliac arteries as well as the aorta up to the renal arteries, due to favourable primary and secondary patency rates compared with endovascular approaches.

Class	Level	References	ToE
I ib	B	Salem <i>et al.</i> (2021) ⁵³⁶ Premaratne <i>et al.</i> (2020) ⁵³⁷ Indes <i>et al.</i> (2013) ⁵³⁸ Starodubtsev <i>et al.</i> (2022) ⁵³⁹	



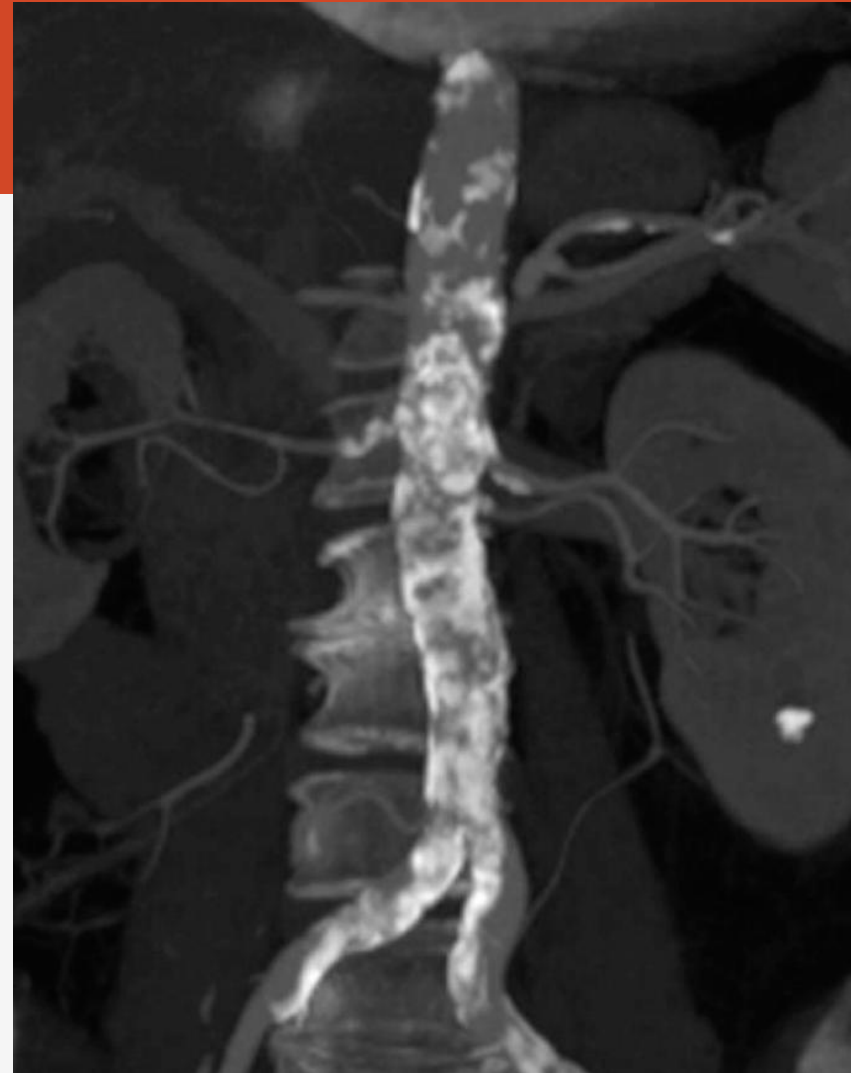
Zásadní otázka?

Co s kalciem?

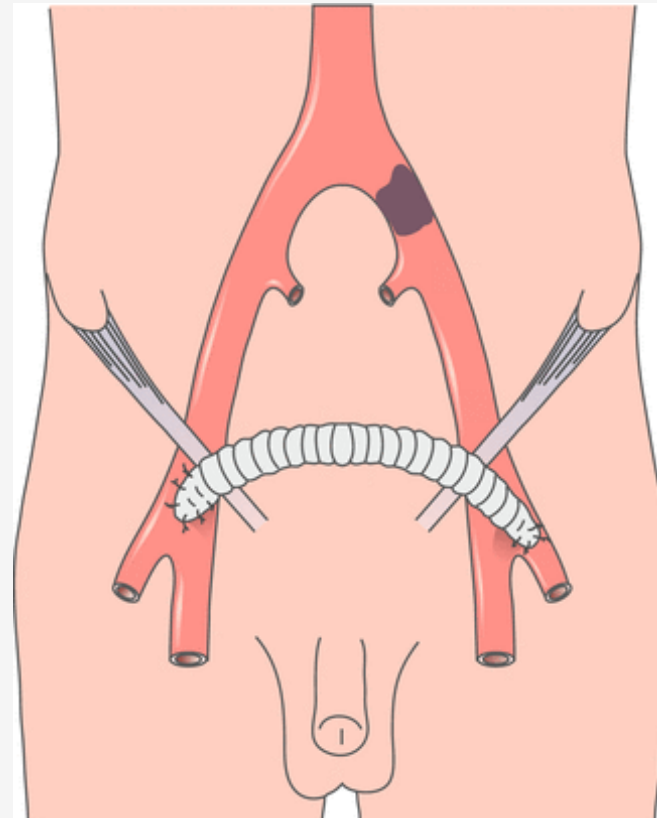
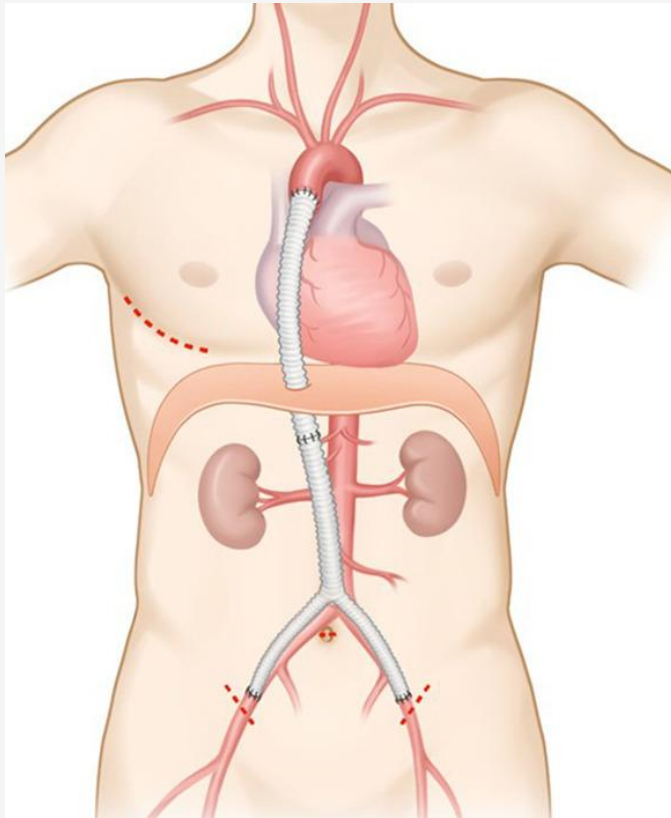
Nesvorkovatelná aorta?

Co s multimorbidními?

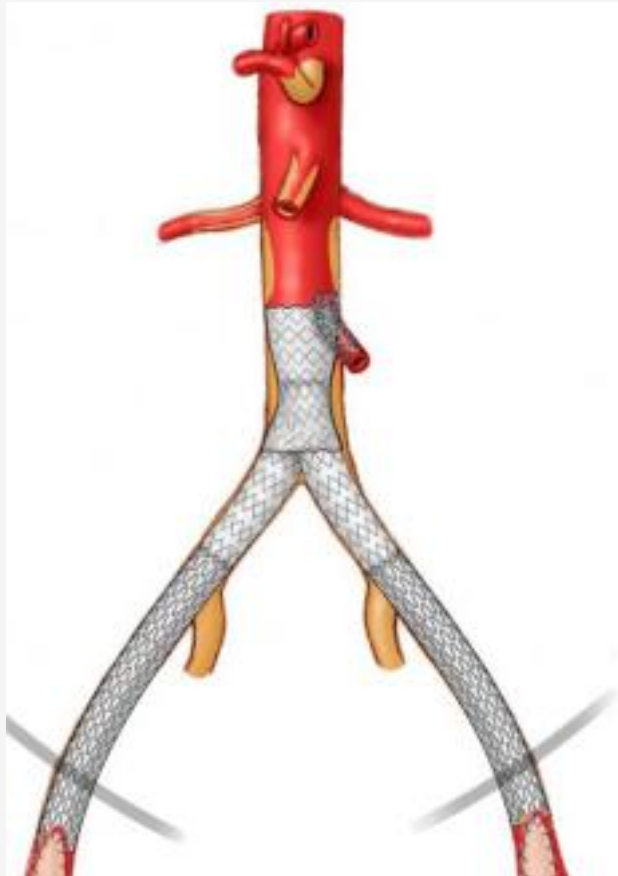
A je otevřená chirurgie ještě pro někoho?



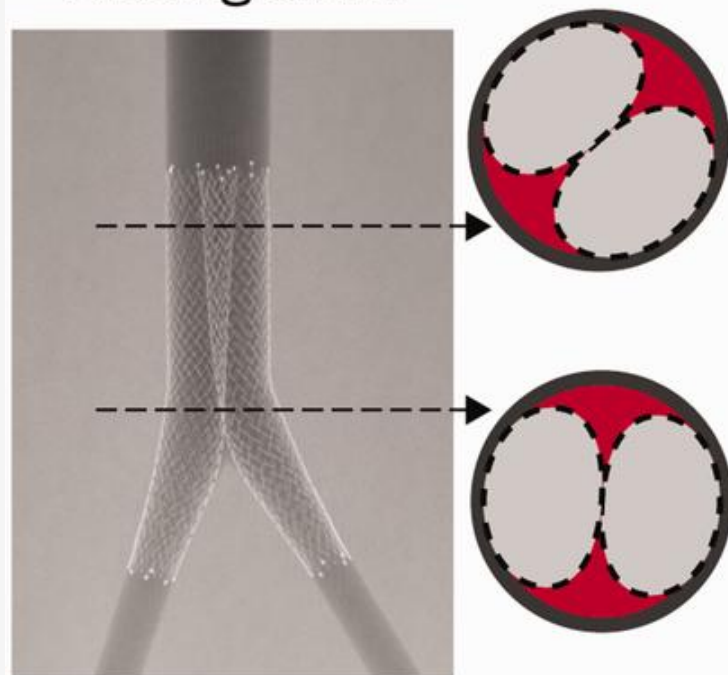
Když nelze otevřená chirurgie



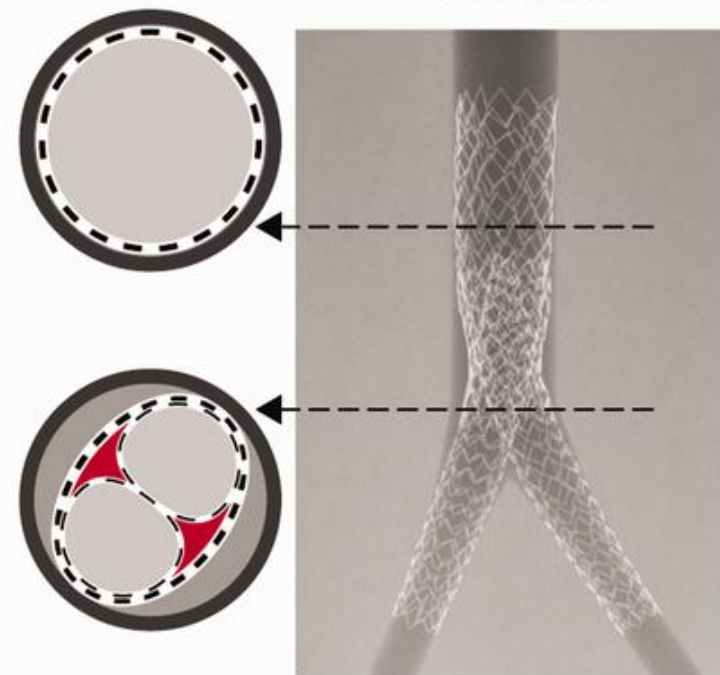
Endovaskulární alternativa jako metoda volby





Kissing stent




CERAB



 Bare metal stent

 Radial mismatch

 Covered stent

Aorta 2

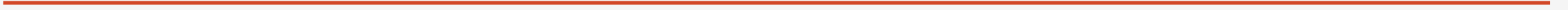


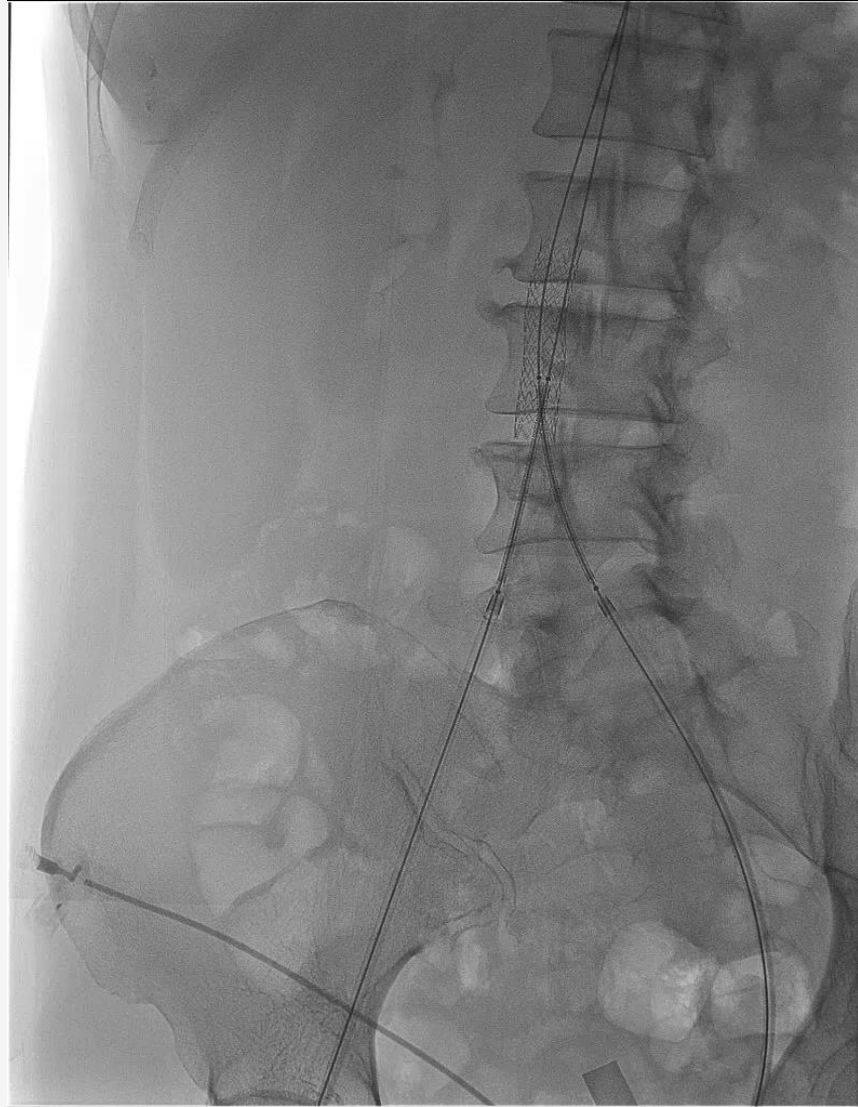


FNKV
Azurion

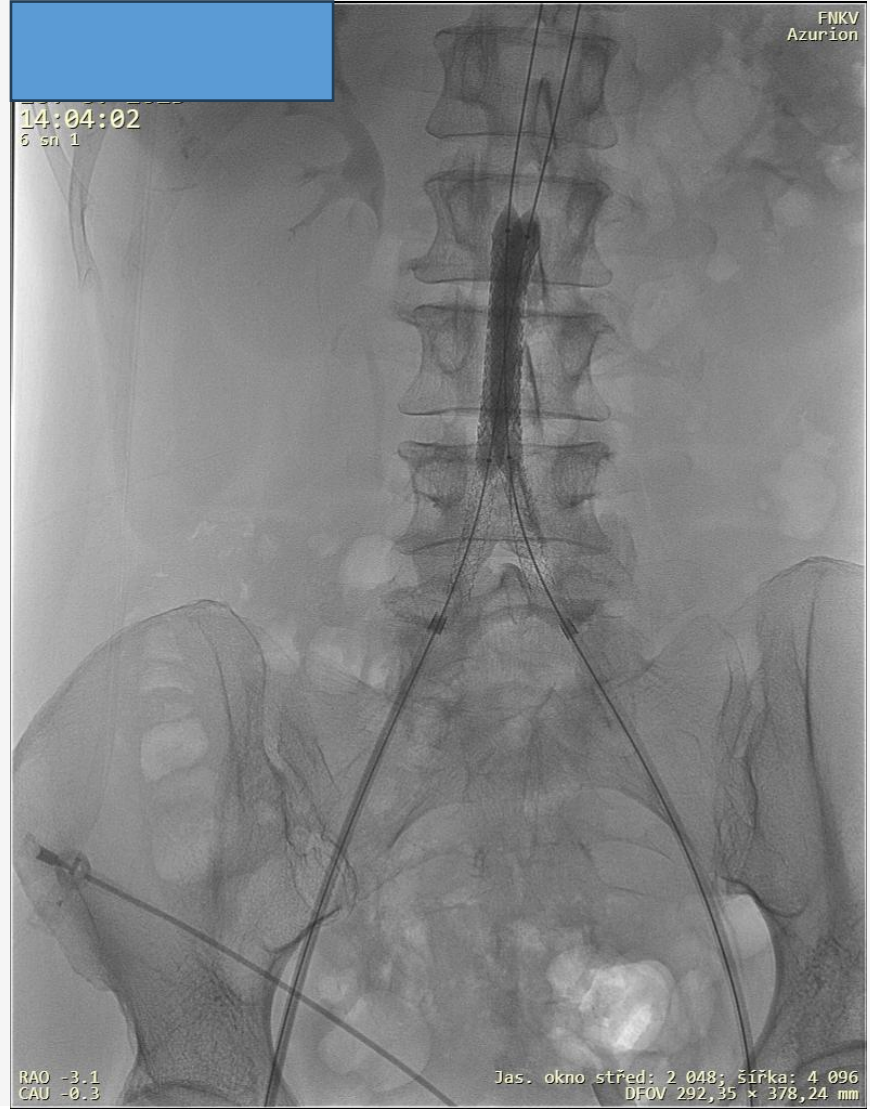
RAO 0.0
CAU -0.2

Jas. okno střed: 2 048; šířka: 4 096
DFOV 292,35 × 378,24 mm









14:04:02
6 sn 1

FNV
Azurion

RAO -3.1
CAU -0.3

Jas. okno střed: 2 048; šířka: 4 096
DFOV 292,35 x 378,24 mm

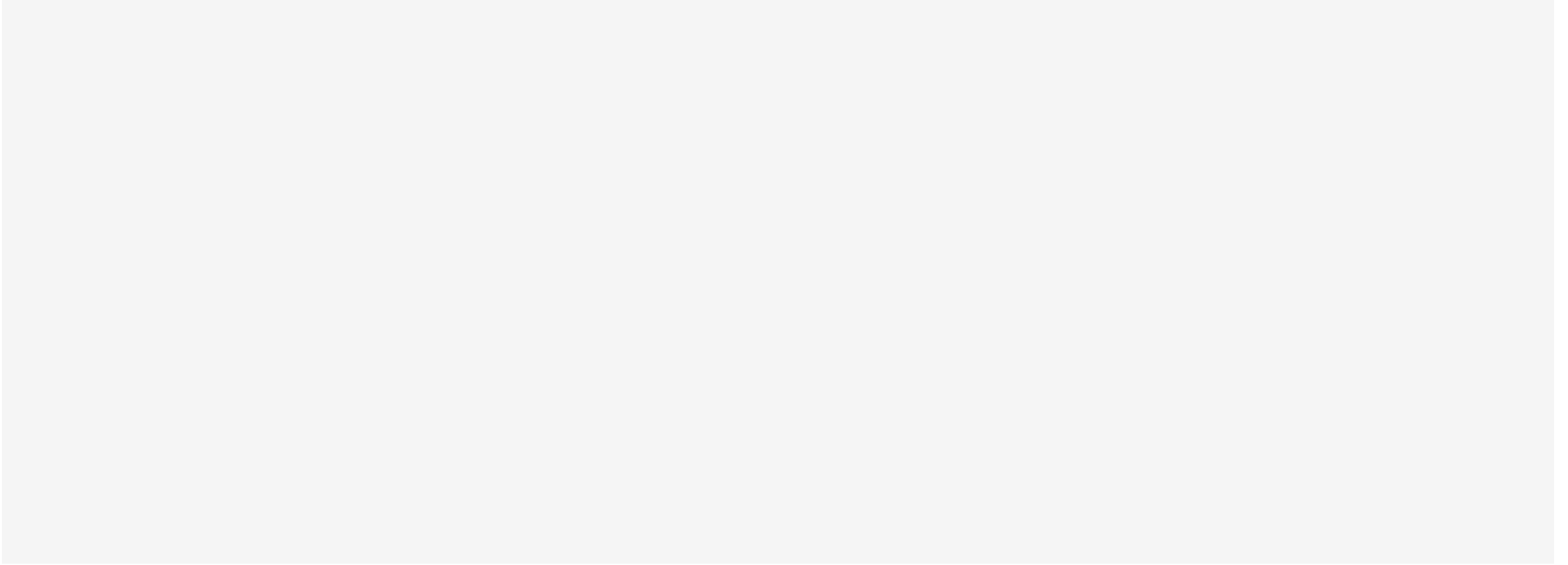


FNKV
Azurion

14:05:50
8 sn 1

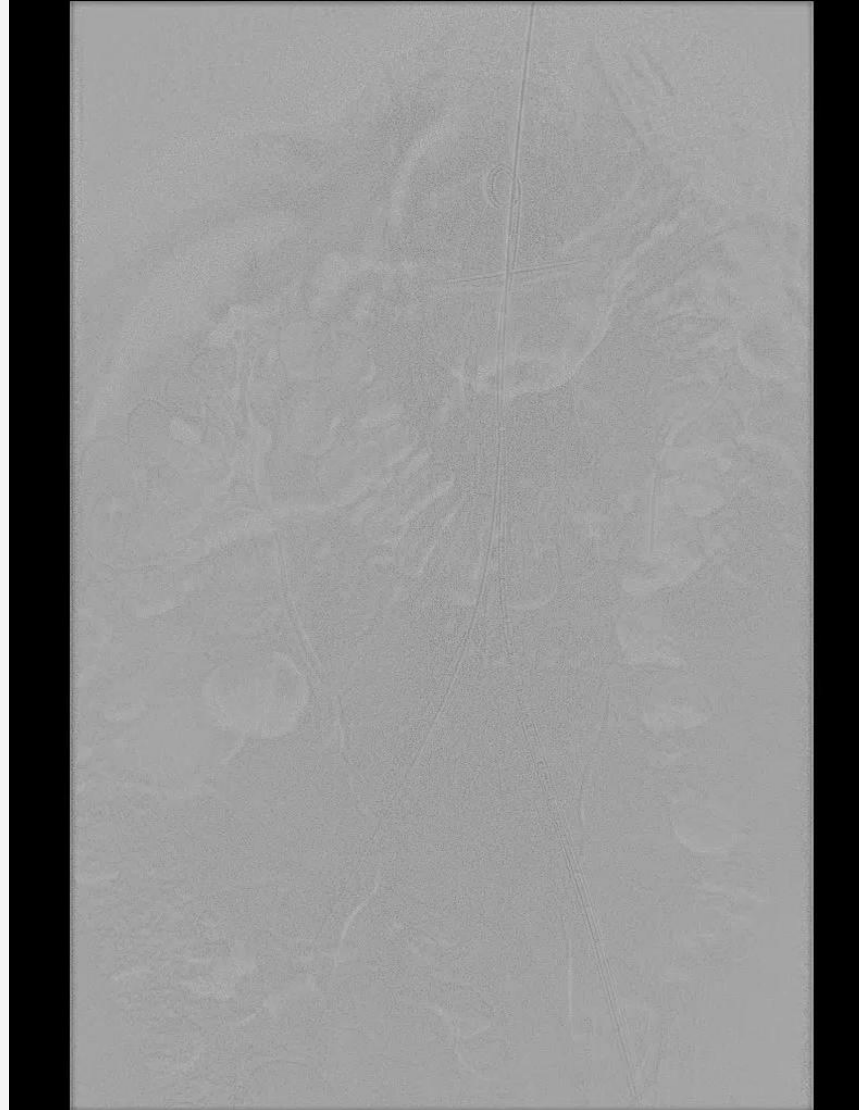
RAO -3.1
CAU -0.3

Jas. okno střed: 2 048; šířka: 4 096
DFOV 292,35 x 378,24 mm



Aorta

...





8:54:03
7 sn 1

FNKV
Azurion

LAO 2.6
CAU -4.5

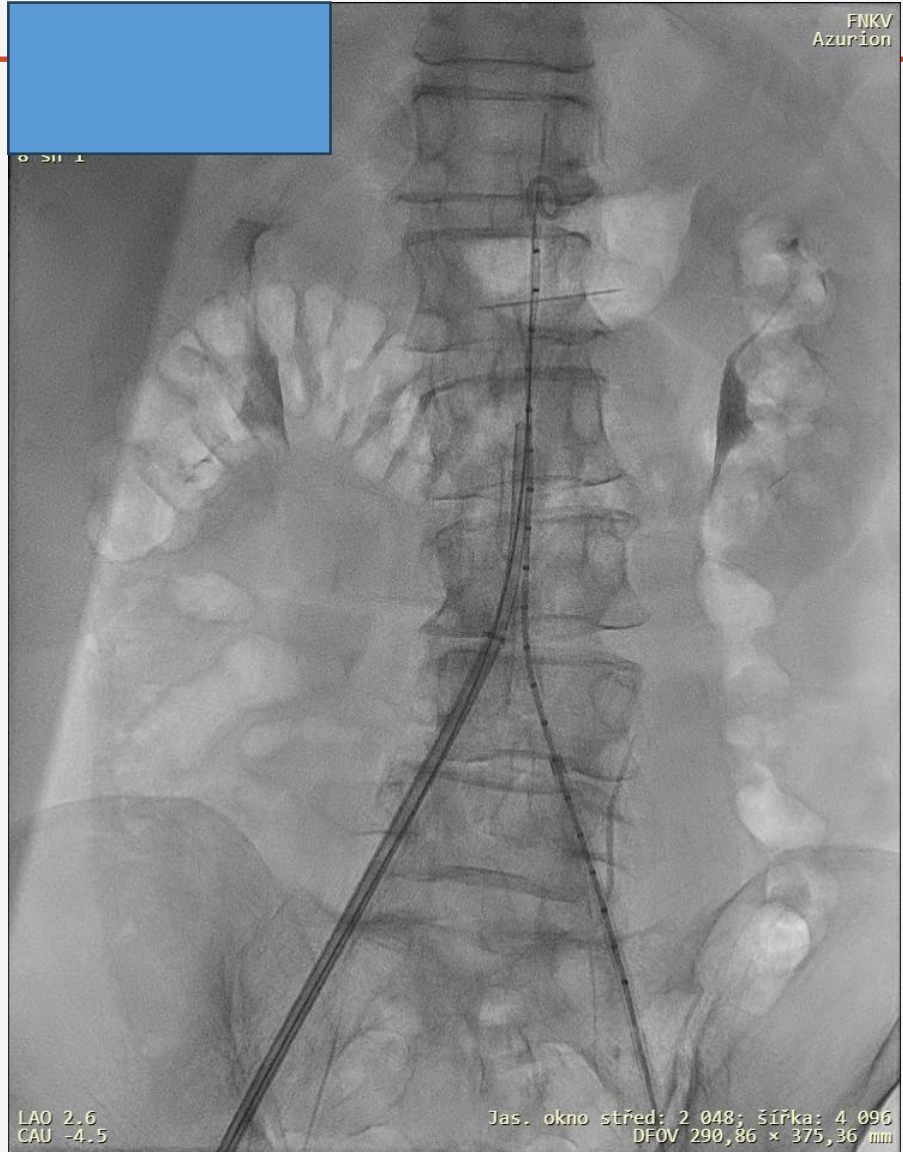
Jas. okno střed: 2 048; šířka: 4 096
DFOV 292,35 × 378,24 mm

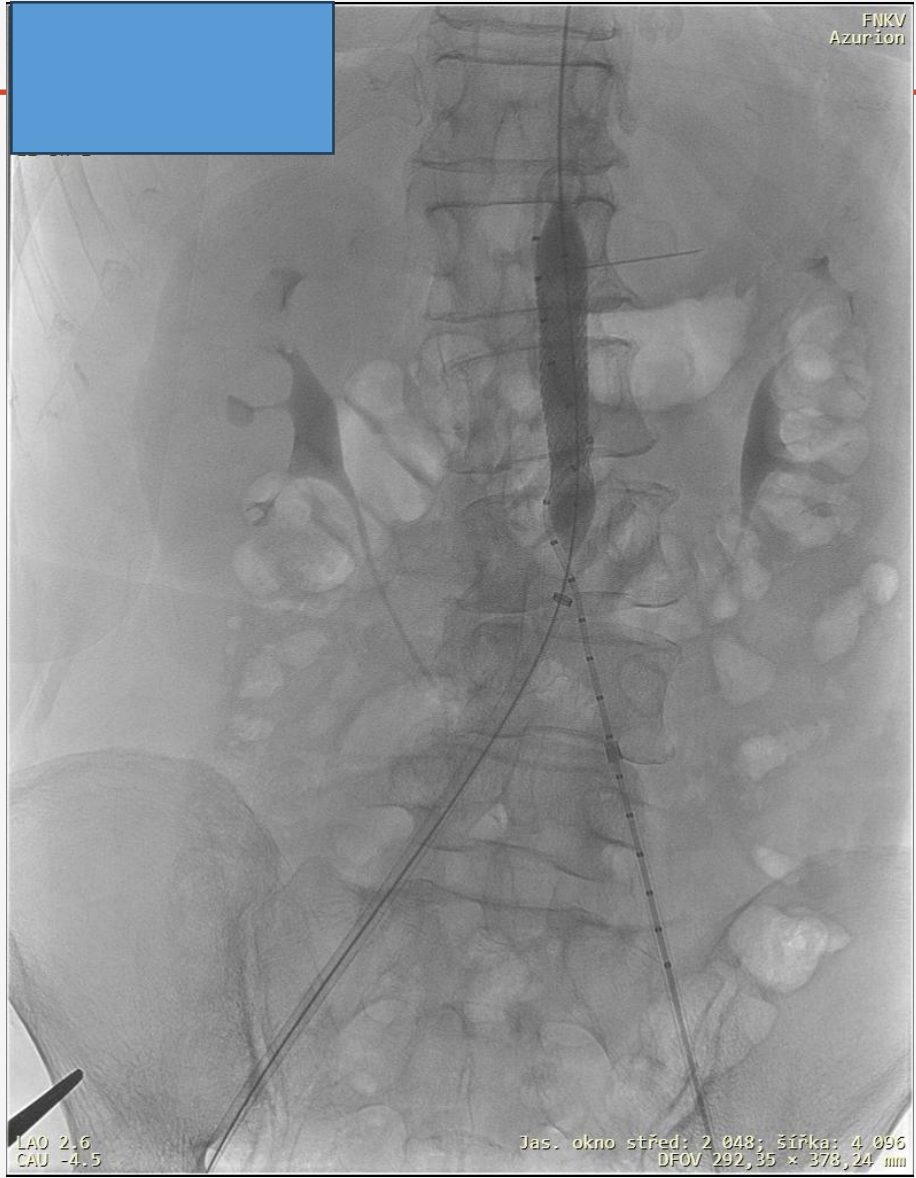
FNKV
Azurion

0 511 1

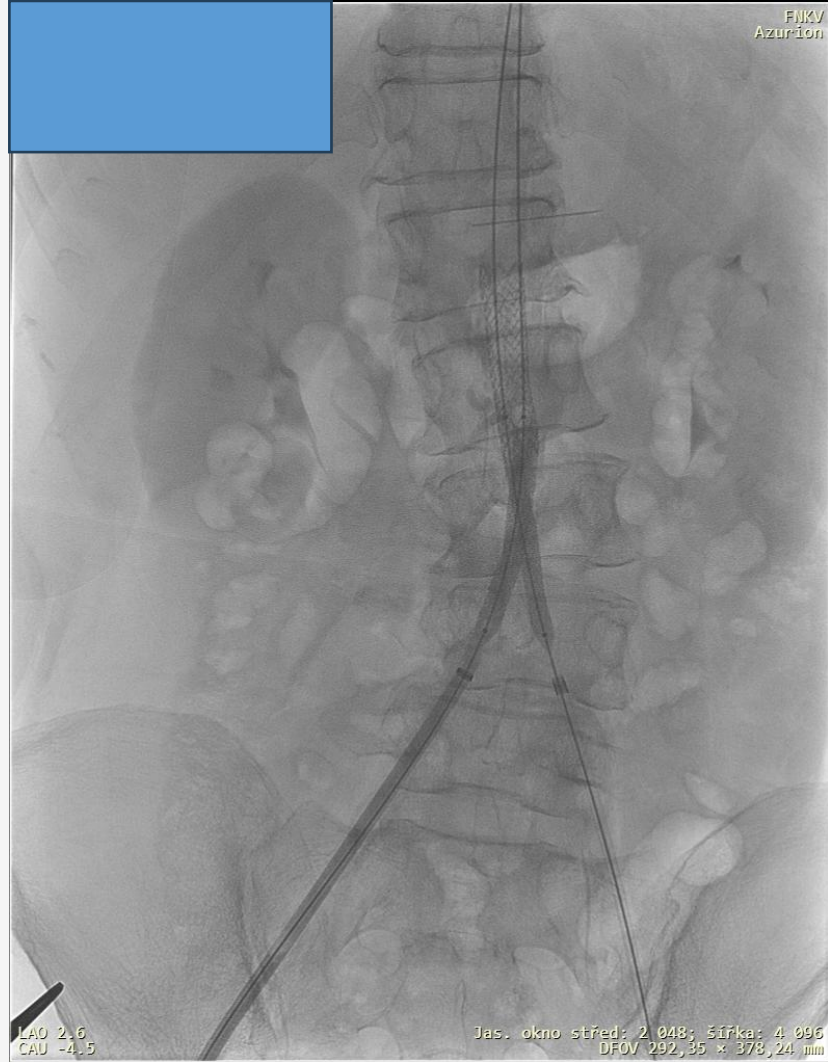
LAO 2.6
CAU -4.5

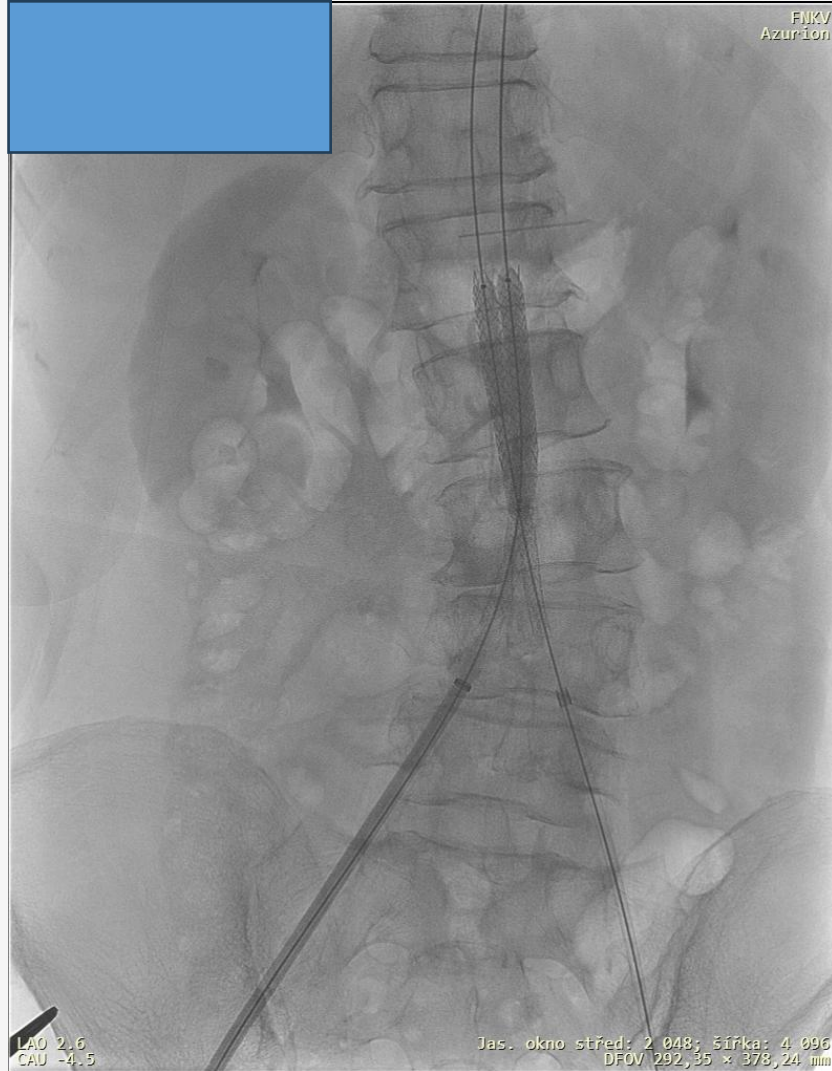
Jas. okno střed: 2 048; šířka: 4 096
DFOV 290,86 × 375,36 mm

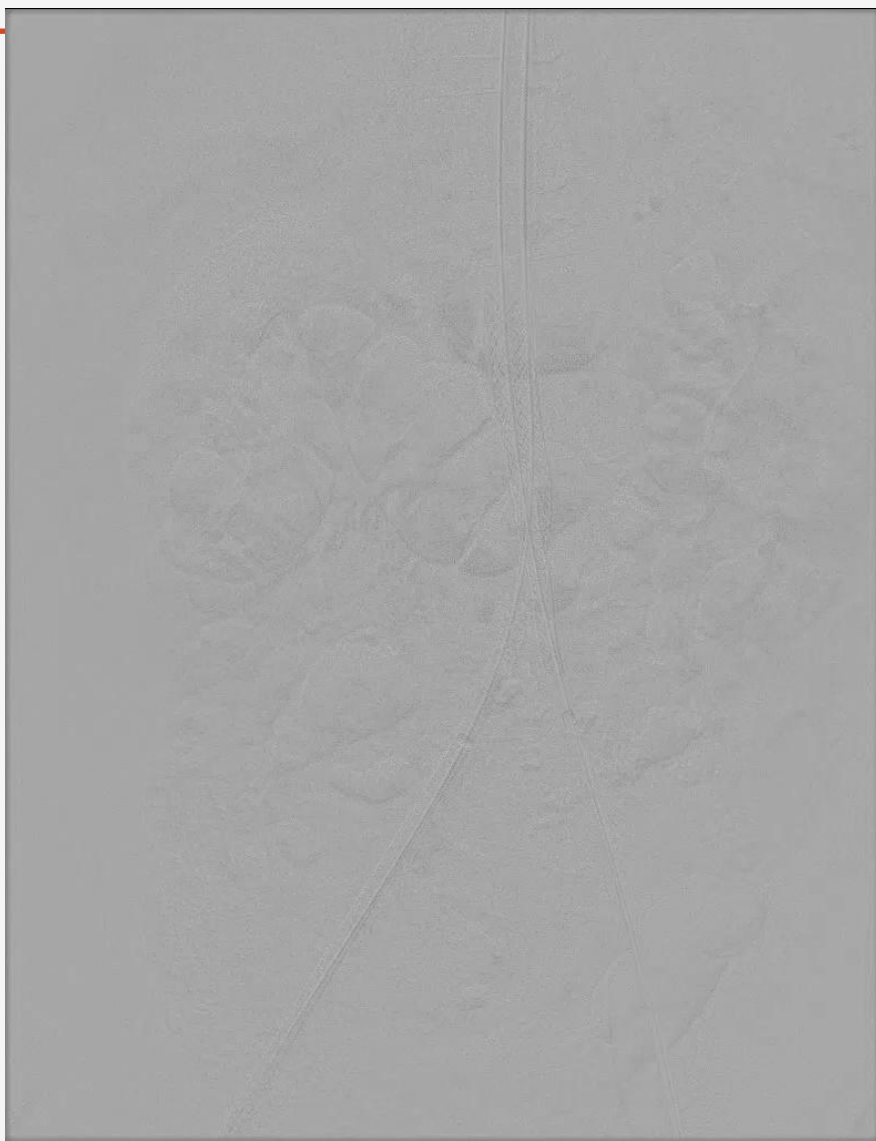


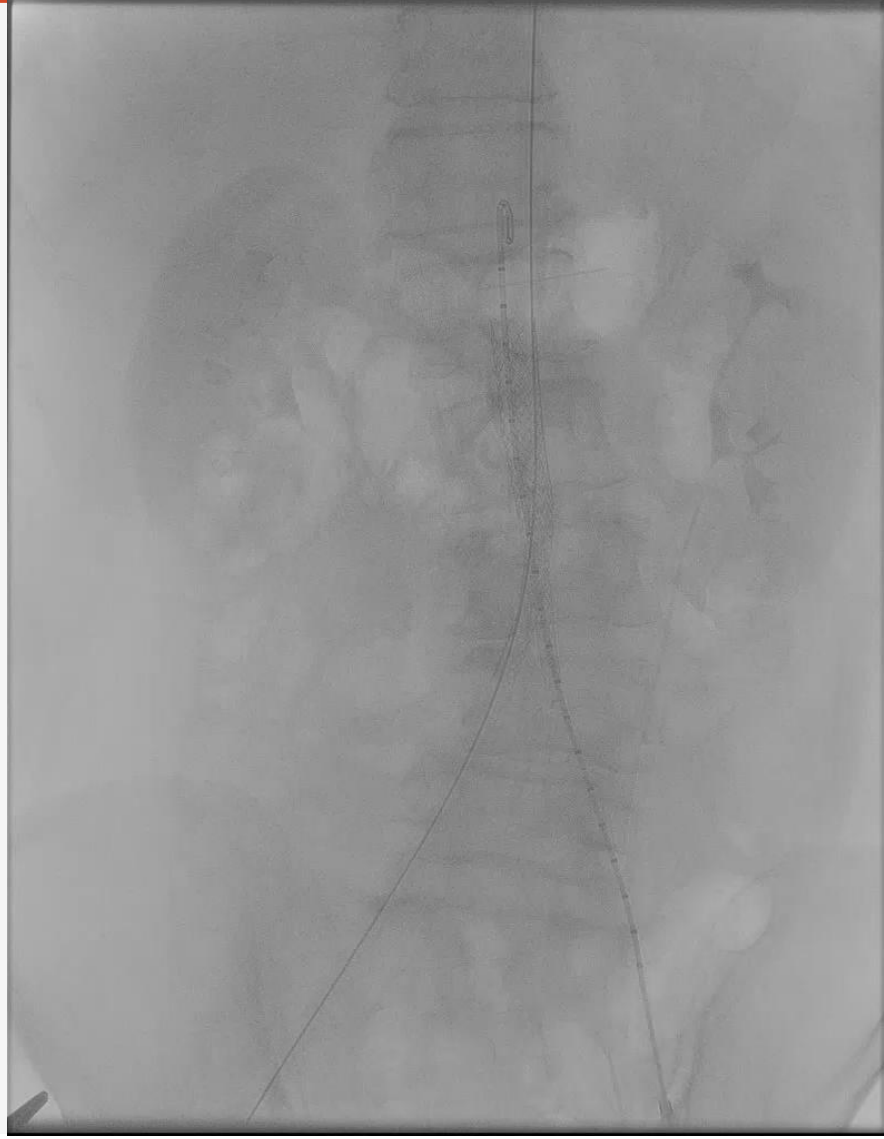


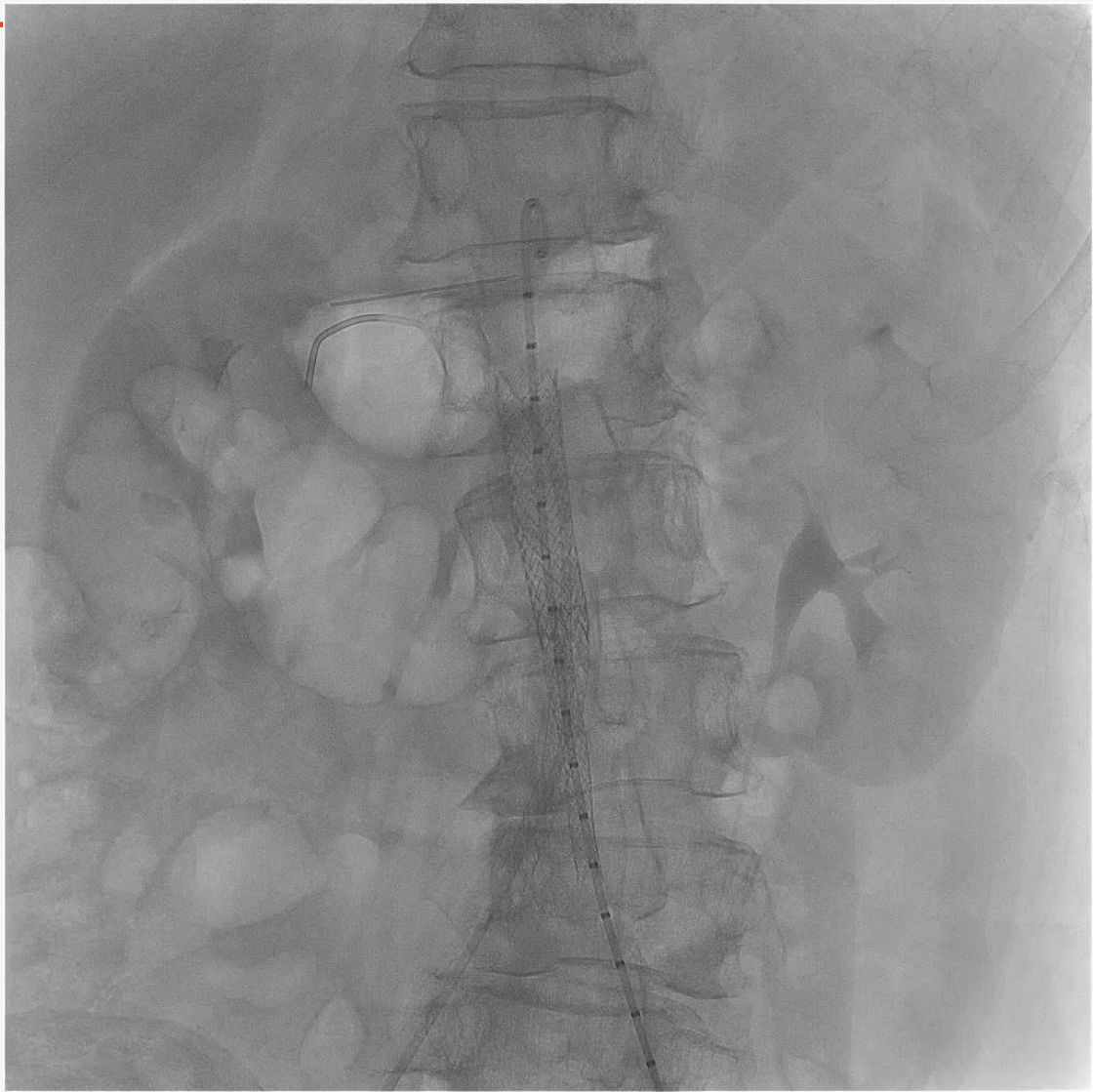














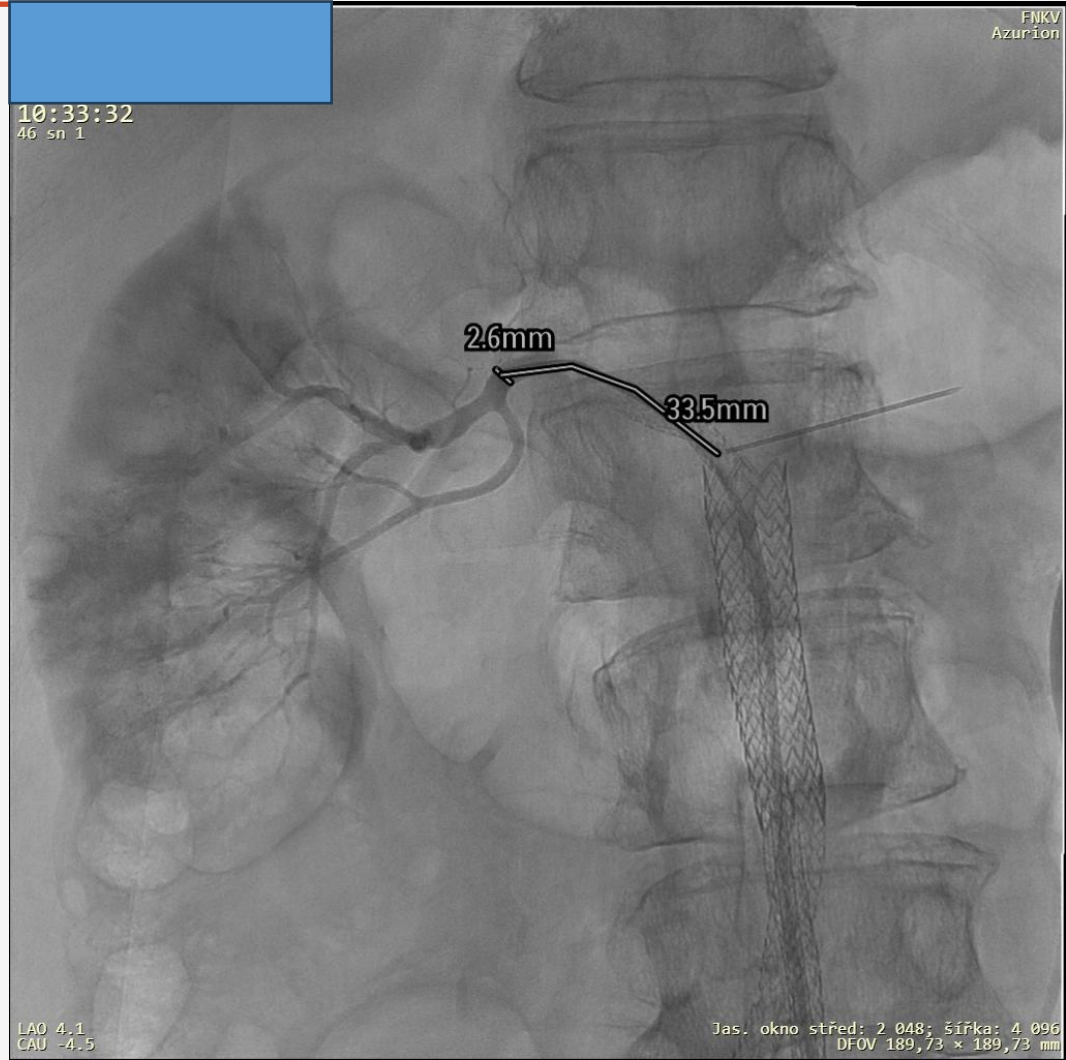
FNKV
Azurion

LAO 13.1
CAU -4.0

Jas. okno střed: 2 048; šířka: 4 096
DFOV 259,95 x 259,95 mm

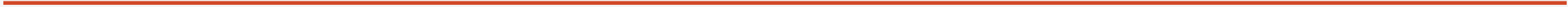
FNKV
Azurion

10:33:32
46 sn 1



LAO 4.1
CAU -4.5

Jas. okno střed: 2 048; šířka: 4 096
DFOV 189,73 × 189,73 mm



Aorta 3

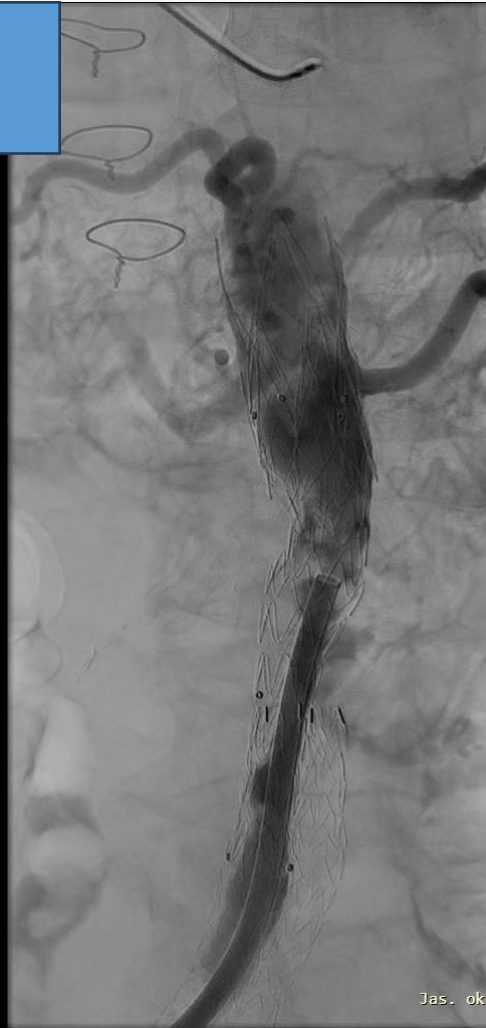




FNKV
Azurion

LAO 30.0
CRA 0.3

Jas. okno střed: 2 048; šířka: 4 096
DFOV 259,95 × 259,95 mm



FNKV
Azurion

LAO 17.4
CRA 23.4

Jas. okno střed: 2 048; šířka: 4 096
DFOV 293,22 × 293,22 mm

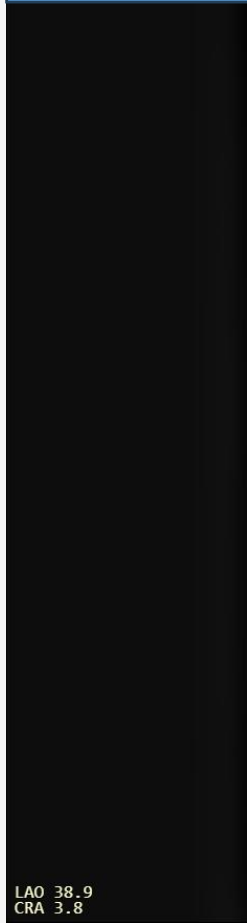
FNKV
Azurion
Frame 1 / 292

11 sn 1

LAO 1.6
CRA 17.6

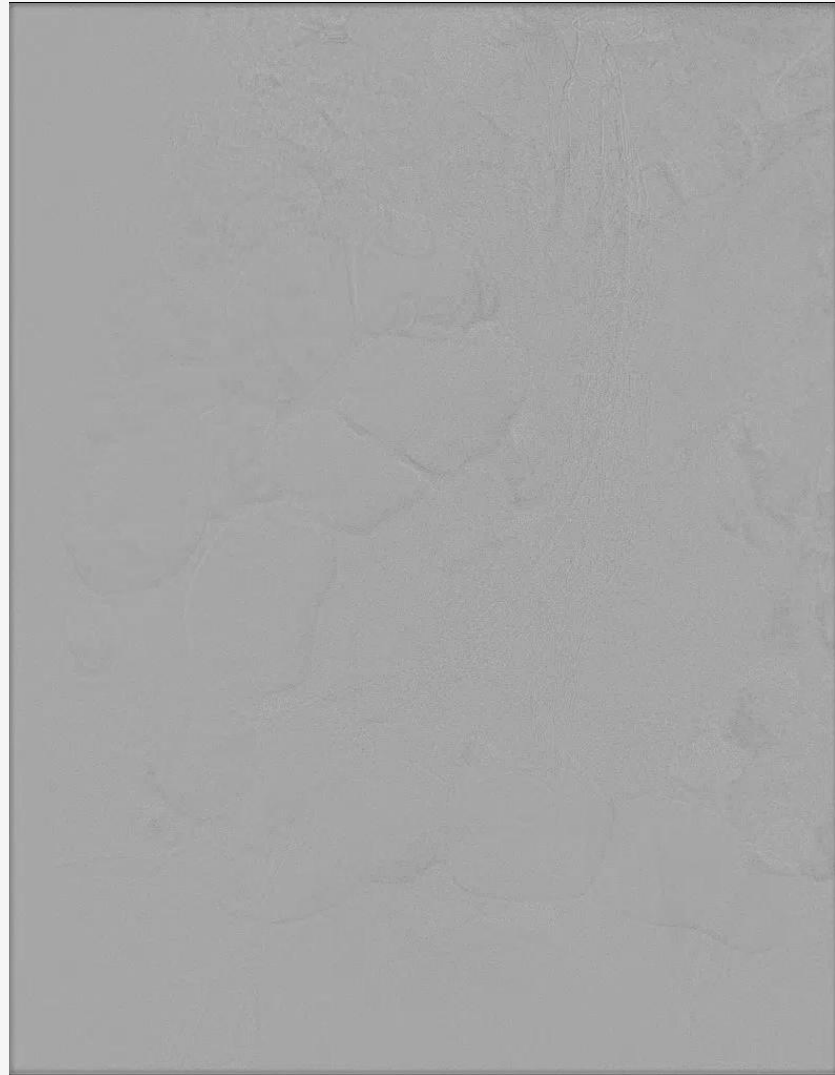
Jas. okno střed: 2 048; šířka: 4 096
DFOV 290,86 × 375,36 mm

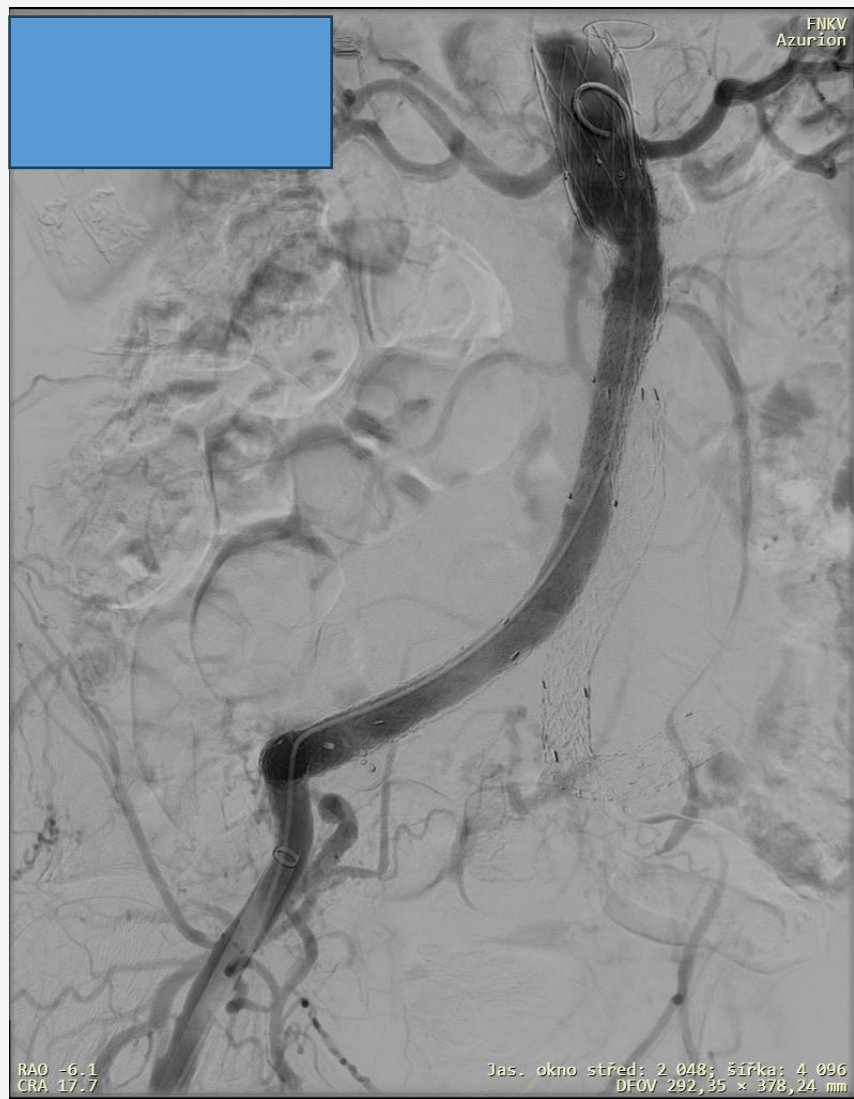
FNKV
Azurion
Frame 1 / 3



LAO 38.9
CRA 3.8

Jas. okno střed: 2 048; šířka: 4 096
DFOV 292,35 × 378,24 mm





Děkuji za pozornost

